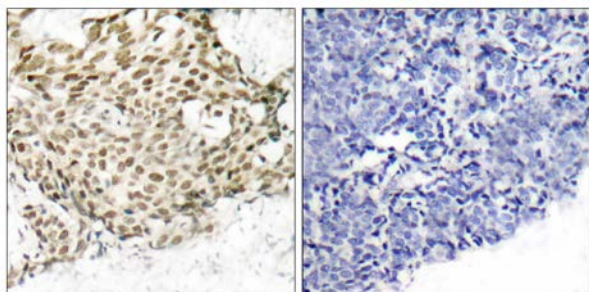




p95/NBS1 (Ab-343) Antibody

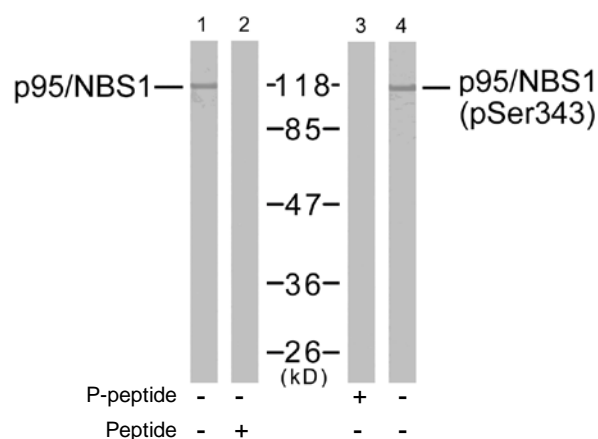
E021058

- Catalog Number:** E021058-1, E021058-2
- Amount:** 50µg/50µl, 100µg/100µl
- Form of Antibody:** Rabbit IgG in phosphate buffered saline (without Mg²⁺ and Ca²⁺), pH 7.4, 150mM NaCl, 0.02% sodium azide and 50% glycerol.
- Storage/Stability:** Store at -20°C/1 year
- Immunogen:** The antiserum was produced against synthesized non-phosphopeptide derived from human p95/NBS1 around the phosphorylation site of serine 343 (S-L-S^P-Q-G).
- Purification:** The antibody was affinity-purified from rabbit antiserum by affinity-chromatography using epitope-specific immunogen.
- Specificity/Sensitivity:** p95/NBS1 (Ab-343) antibody detects endogenous levels of total p95/NBS1 protein.
- Reactivity:** Human
- Applications:** WB: 1:500~1:1000 IHC: 1:50~1:100
- Swiss-Prot No. :** O60934
- References:** Hsu HL, et al (2005) Oncogene; 24(31): 4956-64.
 Falck J, et al. (2005) Nature; 434(7033): 605-11.
 Buscemi G, et al. (2004) Oncogene; 23(46): 7691-700.
 Beausoleil SA, et al. (2004) Proc Natl Acad Sci U S A; 101(33): 12130-5.



Peptide - +

Immunohistochemical analysis of paraffin-embedded human breast carcinoma tissue using p95/NBS1 (Ab-343) antibody (E021058).



Western blot analysis of extracts from Jurkat cells using p95/NBS1 (Ab-343) antibody (E021058, Lane 1 and 2) and p95/NBS1 (phospho-Ser343) antibody (E011057, Lane 3 and 4).

For Research Use Only