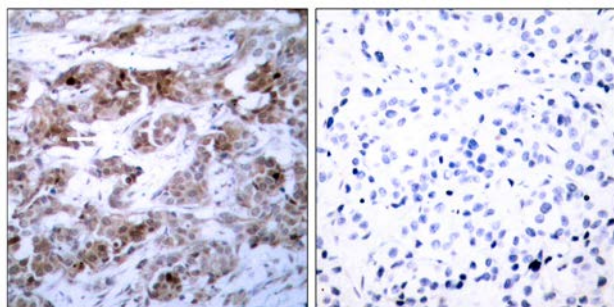




BCL-2 (Ab-70) Antibody

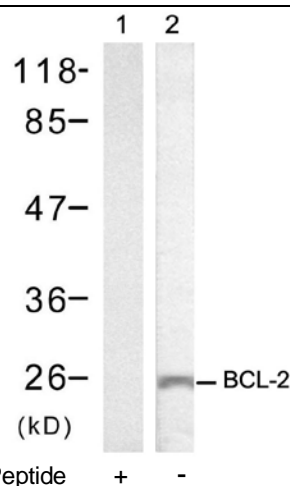
E021060

- Catalog Number:** E021060-1, E021060-2
Amount: 50µg/50µl, 100µg/100µl
Form of Antibody: Rabbit IgG in phosphate buffered saline (without Mg²⁺ and Ca²⁺), pH 7.4, 150mM NaCl, 0.02% sodium azide and 50% glycerol.
Storage/Stability: Store at -20°C/1 year
Immunogen: The antiserum was produced against synthesized non-phosphopeptide derived from human BCL-2 around the phosphorylation site of serine 70 (R-T-S^P-P-L).
Purification: The antibody was affinity-purified from rabbit antiserum by affinity-chromatography using epitope-specific immunogen.
Specificity/Sensitivity: BCL-2 (Ab-70) antibody detects endogenous levels of total BCL-2 protein.
Reactivity: Human
Applications: WB: 1:500~1:1000 IHC: 1:50~1:100 IF: 1:100~1:200
Swiss-Prot No.: P10415
References: Muller IM, et al. (2005) Mol Pharmacol.
Jin Z, Gao F, et al. J Biol Chem 2004 Sep 17; 279(38): 40209-19.
Kumar Biswas S, et al. Mol Cancer Ther 2004 Mar; 3(3): 327-34.
Huang ST, et al. (2002)FASEB J; 16(8): 825-32.
Yamamoto K, et al. (1999) Mol Cell Biol; 19(12): 8469-78.



Peptide - +

Immunohistochemical analysis of paraffin-embedded human breast carcinoma tissue using BCL-2 (Ab-70) antibody (E021060).



Western blot analysis of extracts from MCF7 cells using BCL-2 (Ab-70) antibody (E021060).

For Research Use Only