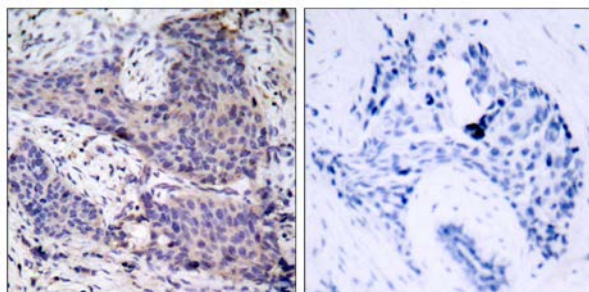




## BAD (Ab-136) Antibody

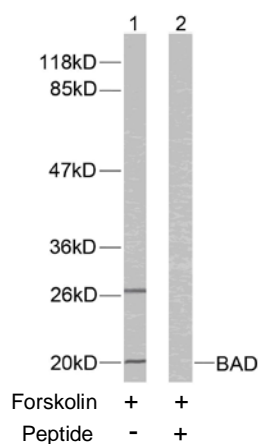
E021063

- Catalog Number:** E021063-1, E021063-2
- Amount:** 50µg/50µl, 100µg/100µl
- Form of Antibody:** Rabbit IgG in phosphate buffered saline (without  $Mg^{2+}$  and  $Ca^{2+}$ ), pH 7.4, 150mM NaCl, 0.02% sodium azide and 50% glycerol.
- Storage/Stability:** Store at -20°C/1 year
- Immunogen:** The antiserum was produced against synthesized non-phosphopeptide derived from human BAD around the phosphorylation site of serine136 (S-R-S<sup>P</sup>-A-P).
- Purification:** The antibody was affinity-purified from rabbit antiserum by affinity-chromatography using epitope-specific immunogen.
- Specificity/Sensitivity:** BAD (Ab-136) antibody detects endogenous levels of total BAD protein.
- Reactivity:** Human, Mouse, Rat
- Applications:** WB: 1:500~1:1000 IHC: 1:50~1:100
- Swiss-Prot No. :** Q92934
- References:** Wang XQ, et al. (2001). J Biol Chem.276 (48): 44504-44511.  
Lee YI, et al. (2001). J Biol Chem.276 (20): 16969-16977.  
Maiti D, et al. (2001). J Biol Chem.276 (1): 329-333.



Peptide - +

Immunohistochemical analysis of paraffin-embedded human breast carcinoma tissue using BAD (Ab-136) antibody (E021063).



Western blot analysis of extracts from 293 cells using BAD (Ab-136) antibody (E021063).

**For Research Use Only**