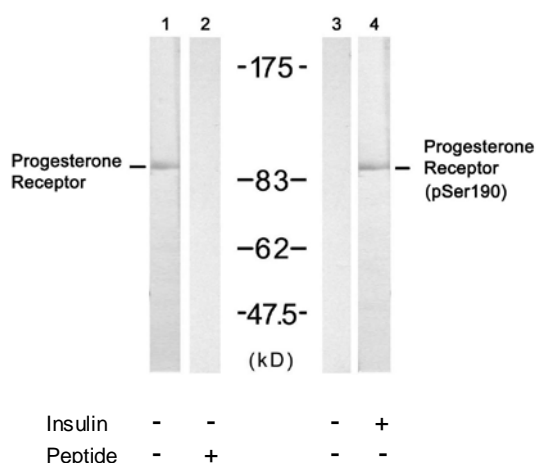




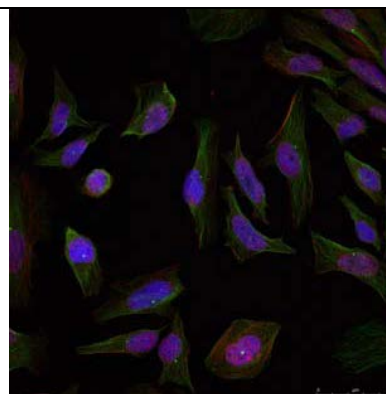
Progesterone Receptor (Ab-190) Antibody

E021069

- Catalog Number:** E021069-1, E021069-2
- Amount:** 50µg/50µl, 100µg/100µl
- Form of Antibody:** Rabbit IgG in phosphate buffered saline (without Mg^{2+} and Ca^{2+}), pH 7.4, 150mM NaCl, 0.02% sodium azide and 50% glycerol.
- Storage/Stability:** Store at -20°C/1 year
- Immunogen:** The antiserum was produced against synthesized non-phosphopeptide derived from human Progesterone Receptor around the phosphorylation site of serine 190 (G-L-S^P-P-A).
- Purification:** The antibody was affinity-purified from rabbit antiserum by affinity-chromatography using epitope-specific immunogen.
- Specificity/Sensitivity:** Progesterone Receptor (Ab-190) antibody detects endogenous levels of total progesterone receptor protein.
- Reactivity:** Human
- Applications:** WB:1:500~1000 IF:1:100~1:200
- Swiss-Prot No.:** P06401
- References:** Narayanan R, et al. (2005) Mol Cell Biol; 25(8): 2885-98.
 Knotts TA, et al. (2001) J Biol Chem; 276(11): 8475-83.
 Clemm DL, et al. (2000) Mol Endocrinol; 14(1): 52-65.
 Zhang Y, et al. (1997) Mol Endocrinol; 11(6): 823-32



Western blot analysis of extract from SKOV3 cell untreated or treated with insulin, using Progesterone Receptor (Ab-190) antibody (E021069, Lane 1 and 2) and Progesterone Receptor (phospho-Ser190) antibody (E011074, Lane 3 and 4).



Immunofluorescence staining of methanol-fixed HeLa cells using Progesterone Receptor (Ab-190) Antibody (E021069, Red).

For Research Use Only