



## EGFR (Ab-1070) Antibody

E021073

**Catalog Number:** E021073-1, E021073-2

**Amount:** 50µg/50µl, 100µg/100µl

**Form of Antibody:** Rabbit IgG in phosphate buffered saline (without Mg<sup>2+</sup> and Ca<sup>2+</sup>), pH 7.4, 150mM NaCl, 0.02% sodium azide and 50% glycerol.

**Storage/Stability:** Store at -20°C/1 year

**Immunogen:** The antiserum was produced against synthesized non-phosphopeptide derived from human EGFR around the phosphorylation site of serine1070 (R-Y-S<sup>P</sup>-S-D).

**Purification:** The antibody was affinity-purified from rabbit antiserum by affinity-chromatography using epitope-specific immunogen.

**Specificity/Sensitivity:** EGFR (Ab-1070) antibody detects endogenous levels of total EGFR protein.

**Reactivity:** Human, Mouse, Rat

**Applications:** WB: 1:500~1:1000    IHC: 1:50~1:100    IF:1:100~1:200

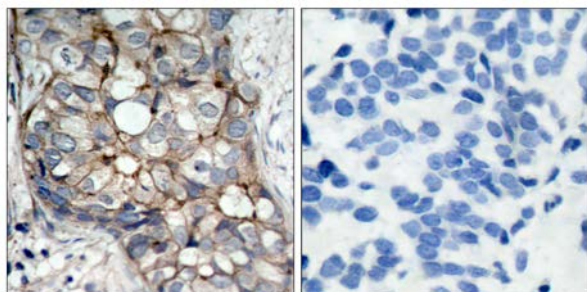
**Swiss-Prot No. :** P00533

**References:** Feinmesser RL, et al. (1999) J Biol Chem; 274(23): 16168-73.

Gamou S, et al. (1995) FEBS Lett; 357(2): 161-4.

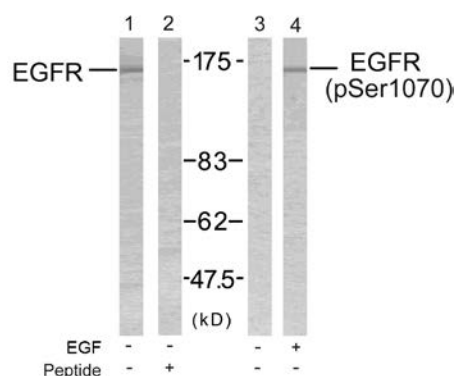
Gamou S, et al. (1994) J Cell Physiol; 158(1): 151-9.

Heisermann GJ, et al. (1988) J Biol Chem; 263(26): 13152-8.



Peptide                      -                      +

Immunohistochemical analysis of paraffin- embedded human breast carcinoma tissue using EGFR (Ab-1070) antibody (E021129).



Western blot analysis of extract from SK-OV3 cells untreated or treated with EGF using EGFR (Ab-1070) antibody (E021073, Lane 1 and 2) and EGFR (phospho-Ser1070) antibody (E011080, Lane 3 and 4).

**For Research Use Only**