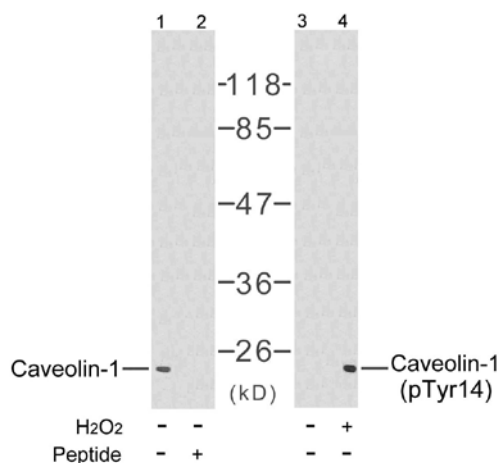




Caveolin-1 (Ab-14) Antibody

E021112

- Catalog Number:** E021112-1, E021112-2
- Amount:** 50µg/50µl, 100µg/100µl
- Form of Antibody:** Rabbit IgG in phosphate buffered saline (without Mg^{2+} and Ca^{2+}), pH 7.4, 150mM NaCl, 0.02% sodium azide and 50% glycerol.
- Storage/Stability:** Store at -20°C/1 year
- Immunogen:** The antiserum was produced against synthesized non-phosphopeptide derived from human Caveolin-1 around the phosphorylation site of tyrosine 14 (H-L-Y^P-T-V).
- Purification:** The antibody was affinity-purified from rabbit antiserum by affinity-chromatography using epitope-specific immunogen.
- Specificity/Sensitivity:** Caveolin-1 (Ab-14) antibody detects endogenous levels of total Caveolin-1 protein.
- Reactivity:** Human, Mouse, Rat
- Applications:** WB: 1:500~1:1000
- Swiss-Prot No. :** Q03135
- References:** Zhang Y, et al. (2005) Mol Cell Proteomics. 4(9): 1240-1250.
 Labrecque L, et al. (2004) J Biol Chem. 279(50): 52132-52140.
 Fielding PE, et al. (2004) Biochemistry. 43(9): 2578-2586.
 Labrecque L, et al. (2003) Mol Biol Cell. 14(1): 334-347.
 Maggi D, et al. (2002) Biochem Biophys Res Commun. 295(5): 1085-1089.



Western blot analysis of the extracts from NIH/3T3 cells untreated or treated with H₂O₂ using Caveolin-1 (Ab-14) antibody (E021112, Lane 1 and 2) and Caveolin-1 (phospho-Tyr14) antibody (E011090, Lane 3 and 4).

For Research Use Only