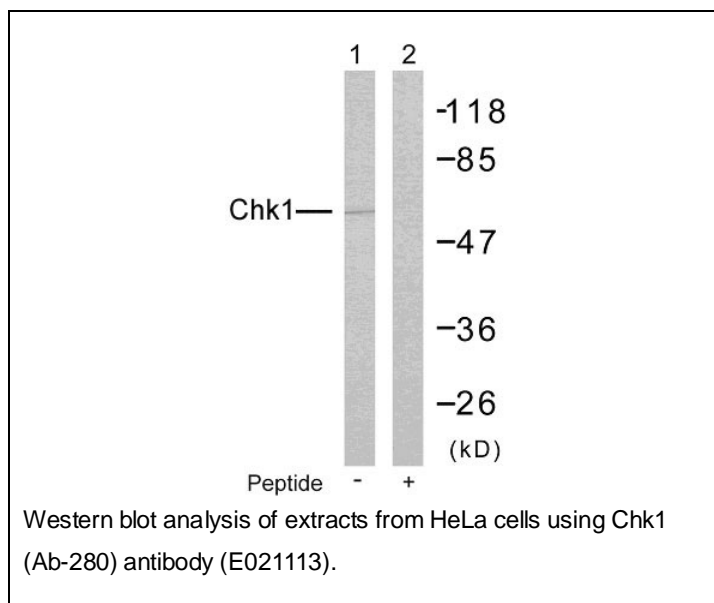




Chk1 (Ab-280) Antibody

E021113

- Catalog Number:** E021113-1, E021113-2
Amount: 50µg/50µl, 100µg/100µl
Form of Antibody: Rabbit IgG in phosphate buffered saline (without Mg²⁺ and Ca²⁺), pH 7.4, 150mM NaCl, 0.02% sodium azide and 50% glycerol.
Storage/Stability: Store at -20°C/1 year
Immunogen: The antiserum was produced against synthesized non-phosphopeptide derived from human Chk1 around the phosphorylation site of serine 280 (V-T-S^P-G-G).
Purification: The antibody was affinity-purified from rabbit antiserum by affinity-chromatography using epitope-specific immunogen.
Specificity/Sensitivity: Chk1 (Ab-280) antibody detects endogenous levels of total Chk1 protein.
Reactivity: Human
Applications: WB: 1:500~1:1000
Swiss-Prot No. : O14757
References: Conn CW, et al. (2004) Dev Cell; 7(2): 275-81
King FW, et al. (2004) Cell Cycle; 3(5): 634-7
Shtivelman E, et al. (2002) Curr Biol; 12(11): 919-24



For Research Use Only