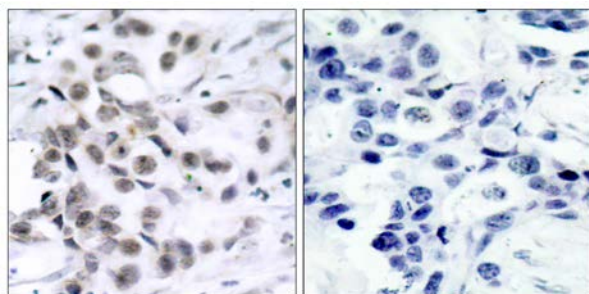




Chk1 (Ab-317) Antibody

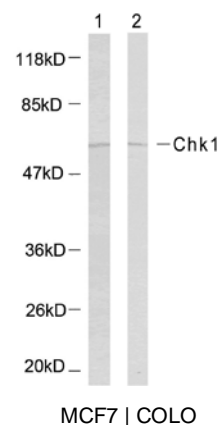
E021114

- Catalog Number:** E021114-1, E021114-2
- Amount:** 50µg/50µl, 100µg/100µl
- Form of Antibody:** Rabbit IgG in phosphate buffered saline (without Mg^{2+} and Ca^{2+}), pH 7.4, 150mM NaCl, 0.02% sodium azide and 50% glycerol.
- Storage/Stability:** Store at -20°C/1 year
- Immunogen:** The antiserum was produced against synthesized non-phosphopeptide derived from human Chk1 around the phosphorylation site of serine 317 (S-S^P-Q-P)
- Purification:** The antibody was affinity-purified from rabbit antiserum by affinity-chromatography using epitope-specific immunogen.
- Specificity/Sensitivity:** Chk1 (Ab-317) antibody detects endogenous levels of total Chk1 protein.
- Reactivity:** Human, Rat
- Applications:** WB: 1:500~1:1000 IHC:1:50~1:100
- Swiss-Prot No. :** O14757
- References:** Zhang YW, et al. (2005) Mol Cell; 19(5): 607-18.
Bhoumik A, et al. (2005) Mol Cell; 18(5): 577-87.
Rocha S, et al. (2005) EMBO J.
Clarke CA, et al. (2005) Biochem J.
Yu X, et al. (2004) Mol Cell Biol; 24(21): 9478-86.



Peptide - +

Immunohistochemical analysis of paraffin-embedded human breast carcinoma tissue using Chk1 (Ab-317) antibody (E021114).



Western blot analysis of the extracts using Chk1 (Ab-317) antibody (E021114).