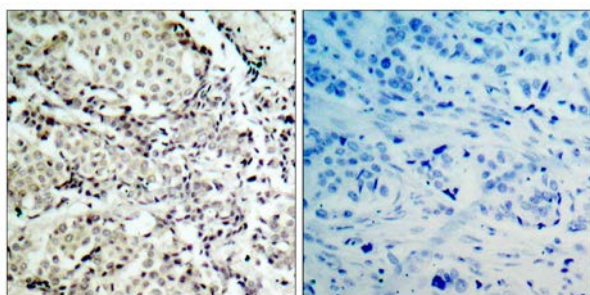




## MKK3 (Ab-189) Antibody

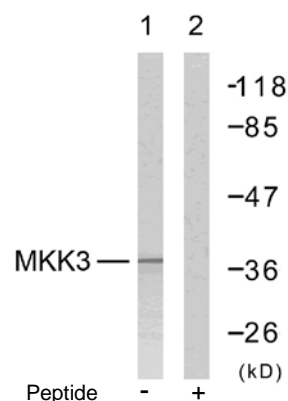
E021116

- Catalog Number:** E021116-1, E021116-2
- Amount:** 50µg/50µl, 100µg/100µl
- Form of Antibody:** Rabbit IgG in phosphate buffered saline (without  $Mg^{2+}$  and  $Ca^{2+}$ ), pH 7.4, 150mM NaCl, 0.02% sodium azide and 50% glycerol.
- Storage/Stability:** Store at -20°C/1 year
- Immunogen:** The antiserum was produced against synthesized non-phosphopeptide derived from human MKK3 around the phosphorylation site of serine189 (V-D-S<sup>P</sup>-V-A).
- Purification:** The antibody was affinity-purified from rabbit antiserum by affinity-chromatography using epitope-specific immunogen.
- Specificity/Sensitivity:** MKK3 (Ab-189) antibody detects endogenous levels of total MKK3 protein.
- Reactivity:** Human, Rat
- Applications:** WB: 1:500~1:1000      IHC: 1:50~1:100      IF: 1:100~1:200
- Swiss-Prot No.:** P46734
- References:** Wang W, et al. (2002) Mol Cell Biol ; 22(10): 3389-403.  
Raingeaud J, et al. (1996) Mol Cell Biol; 16(3): 1247-55.



Peptide                      -                      +

Immunohistochemical analysis of paraffin- embedded human breast carcinoma tissue, using MKK3 (Ab-189) antibody (E021116).



Western blot analysis of extract from MDA-MB-435 cells, using MKK3 (Ab-189) antibody (E021116).