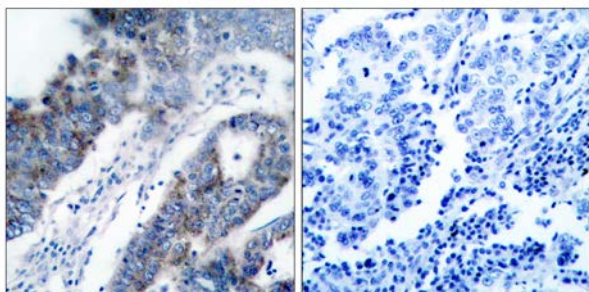




## ASK1 (Ab-83) Antibody

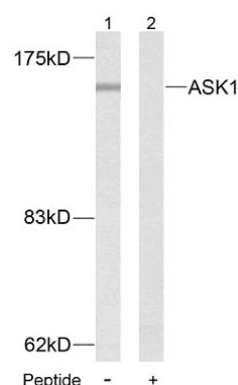
E021125

- Catalog Number:** E021125-1, E021125-2
- Amount:** 50µg/50µl, 100µg/100µl
- Form of Antibody:** Rabbit IgG in phosphate buffered saline (without  $Mg^{2+}$  and  $Ca^{2+}$ ), pH 7.4, 150mM NaCl, 0.02% sodium azide and 50% glycerol.
- Storage/Stability:** Store at -20 °C year
- Immunogen:** The antiserum was produced against synthesized non-phosphopeptide derived from human ASK1 around the phosphorylation site of serine 83 (G-S<sup>P</sup>-V-G).
- Purification:** The antibody was affinity-purified from rabbit antiserum by affinity-chromatography using epitope-specific immunogen.
- Specificity/Sensitivity:** ASK1 (Ab-83) antibody detects endogenous levels of ASK1 protein around serine 83.
- Reactivity:** Human
- Applications:** WB: 1:500~1:1000 IHC: 1:50~1:100
- Swiss-Prot No. :** Q99683
- References:** Mabuchi S, et al. (2004) Endocrinology. 145(1): 49-58.  
Yuan ZQ, et al. (2003) J Biol Chem. 278(26): 23432-23440.  
Kim AH, et al. (2001) Mol Cell Biol. 21(3): 893-901.



Peptide - +

Immunohistochemical analysis of paraffin- embedded human breast carcinoma tissue, using ASK1 (Ab-83) antibody (E021125).



Western blot analysis of extract from MDA-MB- 435 cells, using ASK1 (Ab-83) antibody (E021125).