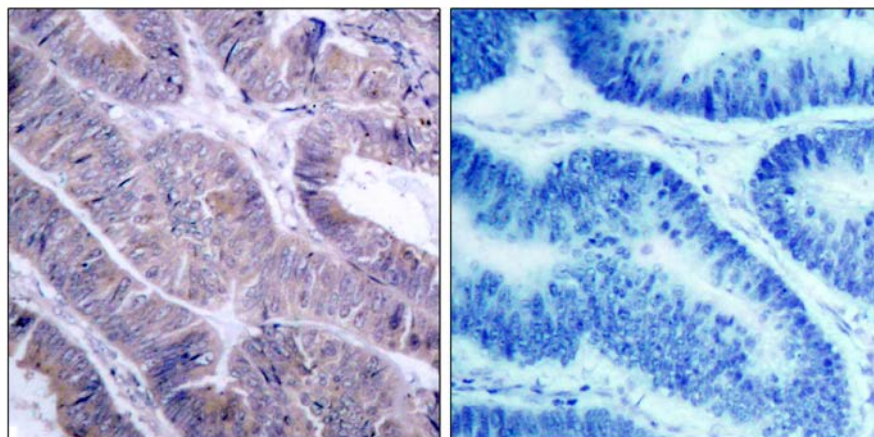




## AMPK1/AMPK2 (Ab-485/491) Antibody

E021130

- Catalog Number:** E021130-1, E021130-2
- Amount:** 50µg/50µl, 100µg/100µl
- Form of Antibody:** Rabbit IgG in phosphate buffered saline (without  $Mg^{2+}$  and  $Ca^{2+}$ ), pH 7.4, 150mM NaCl, 0.02% sodium azide and 50% glycerol.
- Storage/Stability:** Store at -20 °C/1 year
- Immunogen:** The antiserum was produced against synthesized non-phosphopeptide derived from human AMPK1/AMPK2 around the phosphorylation site of serine 485/491 (S-G-S<sup>P</sup>-V-S).
- Purification:** The antibody was affinity-purified from rabbit antiserum by affinity-chromatography using epitope-specific immunogen.
- Specificity/Sensitivity:** AMPK1/AMPK2 (Ab-485/491) antibody detects endogenous levels of total AMPK1/ AMPK2 protein.
- Reactivity:** Human, Mouse, Rat
- Applications:** IHC: 1:50~1:100
- Swiss-Prot No. :** Q13131 P54646
- References:** Kim JE, et al. (2005) J Proteome Res. 4(4): 1339-1346.  
Woods A, et al. (2003) J Biol Chem. 278(31): 28434-28442.



Peptide

-

+

Immunohistochemical analysis of paraffin-embedded human colon carcinoma tissue using AMPK1/AMPK2 (Ab-485/491) antibody (E021130).

**For Research Use Only**