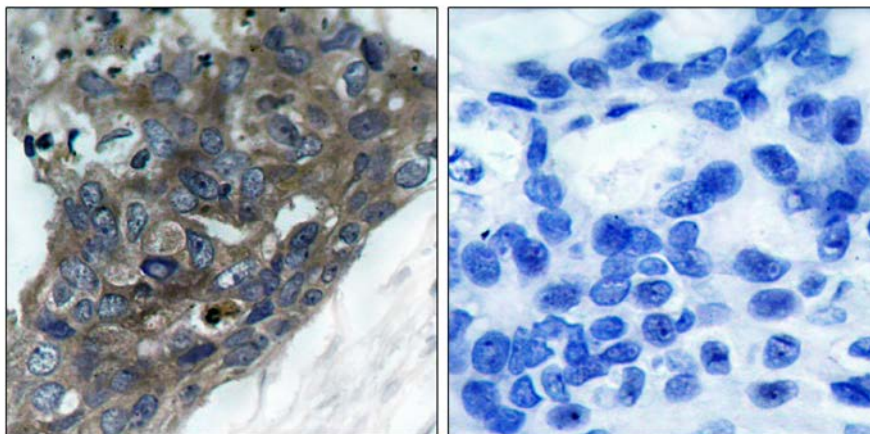




ASK1 (Ab-966) Antibody

E021134

- Catalog Number:** E021134-1, E021134-2
- Amount:** 50µg/50µl, 100µg/100µl
- Form of Antibody:** Rabbit IgG in phosphate buffered saline (without Mg^{2+} and Ca^{2+}), pH 7.4, 150mM NaCl, 0.02% sodium azide and 50% glycerol.
- Storage/Stability:** Store at -20°C/1 year
- Immunogen:** The antiserum was produced against synthesized non-phosphopeptide derived from human ASK1 around the phosphorylation site of serine 966 (S-I-S^P-L-P).
- Purification:** The antibody was affinity-purified from rabbit antiserum by affinity-chromatography using epitope-specific immunogen.
- Specificity/Sensitivity:** ASK1 (Ab-966) antibody detects endogenous levels of total ASK1 protein.
- Reactivity:** Human, Mouse
- Applications:** IHC: 1:50~1:100
- Swiss-Prot No. :** Q99683
- References:** Zhang W, et al. (2005) J Biol Chem. 280(19): 19036-19044.
Fujii K, et al. (2004) Oncogene. 23(29):5099-5104.
Goldman EH, et al. (2004) J Biol Chem 2004 Mar 12; 279(11): 10442-10449.
Zhang L, et al. (1999) Proc Natl Acad Sci U S A. 96(15): 8511-8515.



Peptide

-

+

Immunohistochemical analysis of paraffin-embedded human breast carcinoma tissue, using ASK1 (Ab-966) antibody (E021134).

For Research Use Only