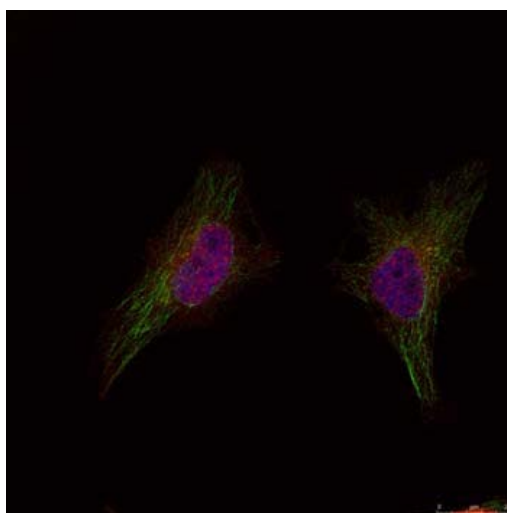




BRCA1 (Ab-1524) Antibody

E021139

- Catalog Number:** E021139-1, E021139-2
- Amount:** 50µg/50µl, 100µg/100µl
- Form of Antibody:** Rabbit IgG in phosphate buffered saline (without Mg^{2+} and Ca^{2+}), pH 7.4, 150mM NaCl, 0.02% sodium azide and 50% glycerol.
- Storage/Stability:** Store at -20°C/1 year
- Immunogen:** The antiserum was produced against synthesized non-phosphopeptide derived from human BRCA1 around the phosphorylation site of serine 1524 (Y-P-S^P-Q-E).
- Purification:** The antibody was affinity-purified from rabbit antiserum by affinity-chromatography using epitope-specific immunogen.
- Specificity/Sensitivity:** BRCA1 (Ab-1524) Antibody detects endogenous levels of total BRCA1 protein.
- Reactivity:** Human
- Applications:** IF:1:100~1:200
- Swiss-Prot No. :** P38398
- References:** Lin SY, et al. (2004) Proc Natl Acad Sci U S A, 101(17): 6484-6489
Zhang J, et al. (2004) Mol Cell Biol; 24(2): 708-718
Beger C, et al. (2001) Proc Natl Acad Sci U S A; 98(1): 130-135
Gardner K, et al. (2001) Breast Cancer Res; 3(1): 11-13
Zheng L, et al. (2001) Proc Natl Acad Sci U S A; 98(17): 9587-9592



Immunofluorescence staining of methanol-fixed HeLa cells using BRCA1 (Ab-1524) Antibody (E021139, Red).

For Research Use Only