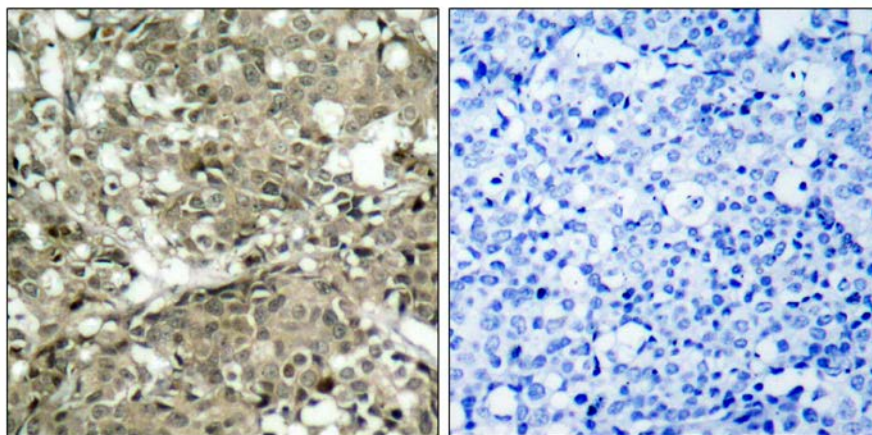




c-Abl (Ab-412) Antibody

E021156

- Catalog Number:** E021156-1, E021156-2
Amount: 50µg/50µl, 100µg/100µl
Swiss-Prot No. : P00519
Form of Antibody: Rabbit IgG in phosphate buffered saline (without Mg^{2+} and Ca^{2+}), pH 7.4, 150mM NaCl, 0.02% sodium azide and 50% glycerol.
Storage/Stability: Store at -20°C/1 year
Immunogen: The antiserum was produced against synthesized non-phosphopeptide derived from human c-Abl around the phosphorylation site of tyrosine 412 (D-T-Y^P-T-A).
Purification: The antibody was affinity-purified from rabbit antiserum by affinity-chromatography using epitope-specific immunogen.
Specificity/Sensitivity: c-Abl (Ab-412) antibody detects endogenous levels of total c-Abl protein.
Reactivity: Human, Mouse
Applications: IHC: 1:50~1:100
References: Kawai H, et al. (2002) Mol Cell Biol 22(17): 6079-6088.
Vogt Sionov R, et al. (2001) Mol Cell Biol 21(17): 5869-5878.
Kharbanda S, et al. (2000) Mol Cell Biol 20(14): 4979-4989.
Yoshida K, et al. (2002) Mol Cell Biol 22(10): 3292-3300.



Peptide

-

+

Immunohistochemical analysis of paraffin-embedded human breast carcinoma tissue using c-Abl (Ab-412) antibody (E021156).

For Research Use Only