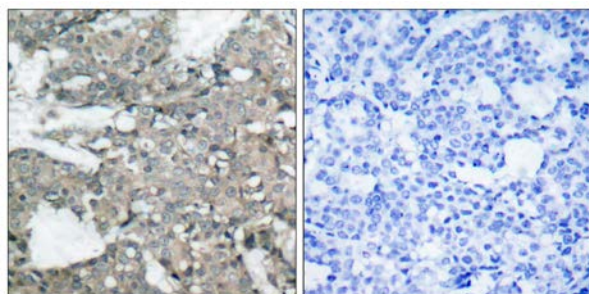




MEK1 (Ab-221) Antibody

E021175

- Catalog Number:** E021175-1, E021175-2
- Amount:** 50µg/50µl, 100µg/100µl
- Form of Antibody:** Rabbit IgG in phosphate buffered saline (without Mg^{2+} and Ca^{2+}), pH 7.4, 150mM NaCl, 0.02% sodium azide and 50% glycerol.
- Storage/Stability:** Store at -20°C/1 year
- Immunogen:** The antiserum was produced against synthesized non-phosphopeptide derived from human MEK1 around the phosphorylation site of serine 221 (A-N-S^P-F-V).
- Purification:** The antibody was affinity-purified from rabbit antiserum by affinity-chromatography using epitope-specific immunogen.
- Specificity/Sensitivity:** MEK1 (Ab-221) antibody detects endogenous levels of total MEK1 protein.
- Reactivity:** Human, Mouse, Rat
- Applications:** WB: 1:500~1:1000 IHC: 1:50~1:100
- Swiss-Prot No. :** Q02750
- References:** Zebisch A, et al. (2006) Cancer Res; 66(7): 3401-8.
 Luciano BS, et al. (2006) J Biol Chem; 279(50): 52117-23.
 Wang X, et al. (2003) Oncogene; 22(1): 109-16.
 Gopalbhai K, et al. (2003) J Biol Chem; 278(10): 8118-25.
 Ling MT, et al. (2002) Oncogene; 21(55): 8498-505.

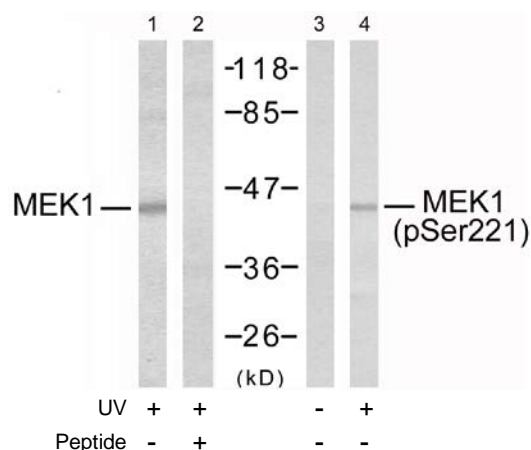


Peptide

-

+

Immunohistochemical analysis of paraffin-embedded human breast carcinoma tissue using MEK1 (Ab-221) antibody (E021175).



Western blot analysis of extracts from Jurkat cells using MEK1 (Ab-221) antibody (E021175, Lane 1 and 2) and MEK1 (phospho-Ser221) antibody (E011161, Lane 3 and 4).

For Research Use Only