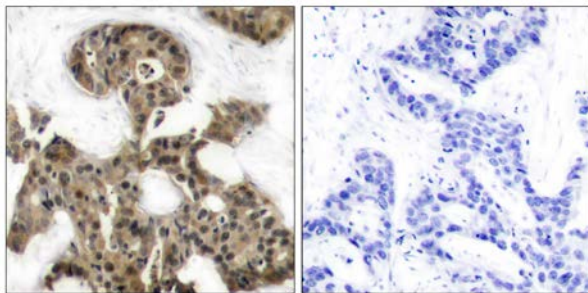




4E-BP1 (Ab-45) Antibody

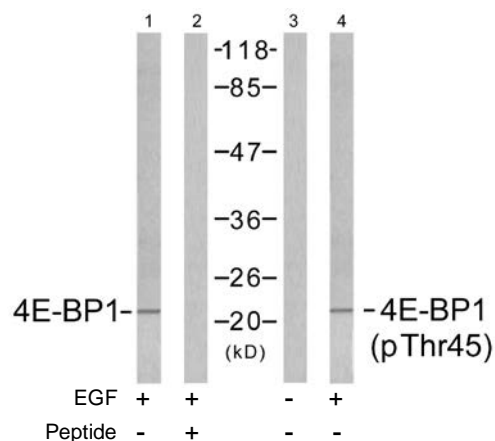
E021216

- Catalog Number:** E021216-1, E021216-2
- Amount:** 50µg/50µl, 100µg/100µl
- Swiss-Prot No. :** Q13541
- Form of Antibody:** Rabbit IgG in phosphate buffered saline (without Mg^{2+} and Ca^{2+}), pH 7.4, 150mM NaCl, 0.02% sodium azide and 50% glycerol.
- Storage/Stability:** Store at -20°C/1 year
- Immunogen:** The antiserum was produced against synthesized non-phosphopeptide derived from human 4E-BP1 around the phosphorylation site of threonine 45 (S-T^P-P-G).
- Purification:** The antibody was affinity-purified from rabbit antiserum by affinity-chromatography using epitope-specific immunogen.
- Specificity/Sensitivity:** 4E-BP1 (Ab-45) antibody detects endogenous levels of total 4E-BP1 protein. This antibody may cross-react with 4E-BP2 and 4E-BP3.
- Reactivity:** Human, Mouse, Rat
- Applications:** WB: 1:500~1:1000 IHC: 1:50~1:100
- References:** Gingras AC, et al. (1998) *Genes Dev* 12(4): 502-513.
 Brugarolas J, et al. (2004) *Genes Dev* 18(23): 2893-2904.
 Kumar V, et al. (2000) *EMBO J* 19(5): 1087-1097.
 Moody CA, et al. (2005) *J Virol* 79(9): 5499-5506.
 Burnett PE, et al. (1998) *Proc Natl Acad Sci U S A* 95(4): 1432-1437.



Peptide - +

Immunohistochemical analysis of paraffin-embedded human breast carcinoma tissue using 4E-BP1 (Ab-45) antibody (E021216).



Western blot analysis of extracts from MDA-MB-435 cells untreated or treated with EGF (200ng/ml, 5min), using 4E-BP1 (Ab-45) antibody (E021216, Lane1 and 2) and 4E-BP1 (phospho-Thr45) antibody (E011223, Lane 3 and 4).

For Research Use Only