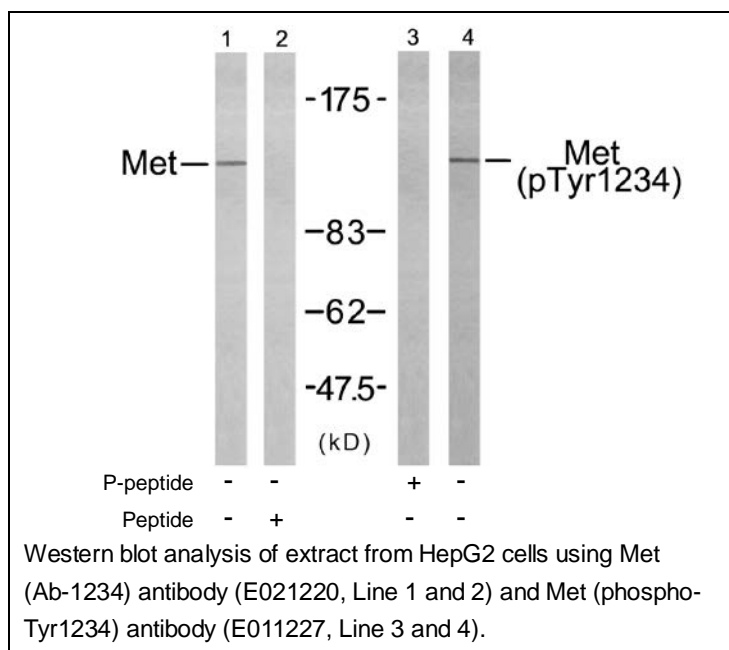




Met (Ab-1234) Antibody

E021220

- Catalog Number:** E021220-1, E021220-2
Amount: 50µg/50µl, 100µg/100µl
Swiss-Prot No.: P08581
All Names: MET Hepatocyte growth factor receptor [Precursor]
Form of Antibody: Rabbit IgG in phosphate buffered saline (without Mg^{2+} and Ca^{2+}), pH 7.4, 150mM NaCl, 0.02% sodium azide and 50% glycerol.
Storage/Stability: Store at -20°C/1 year
Immunogen: The antiserum was produced against synthesized non-phosphopeptide derived from human Met around the phosphorylation site of tyrosine 1234 (K-E-Y^P-Y-S).
Purification: The antibody was affinity-purified from rabbit antiserum by affinity-chromatography using epitope-specific immunogen.
Specificity/Sensitivity: Met (Ab-1234) antibody detects endogenous levels of total Met protein.
Reactivity: Human, Mouse, Rat
Applications: WB: 1:500~1:1000
References: Gherardi E. et al. (2003). Proc Natl Acad Sci U S A. 100(21): 12039-12044.
Shiu SH. et al. (2001) Proc Natl Acad Sci U S A. 98(19): 10763-10768.
Hughes AL. et al. (2001) Genome Res. 11(5): 771-780.
Onuchic LF. et al. (2002) Am J Hum Genet. 70(5): 1305-1317.



For Research Use Only