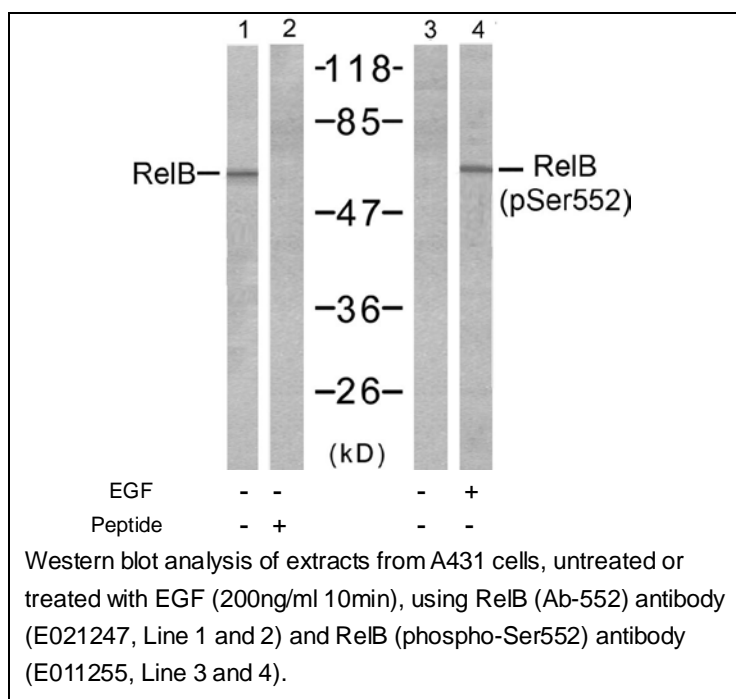




RelB (Ab-552) Antibody

E021247

- Catalog Number:** E021247-1, E021247-2
Amount: 50µg/50µl, 100µg/100µl
Swiss-Prot No. : Q01201
Form of Antibody: Rabbit IgG in phosphate buffered saline (without Mg²⁺ and Ca²⁺), pH 7.4, 150mM NaCl, 0.02% sodium azide and 50% glycerol.
Storage/Stability: Store at -20°C/1 year
Immunogen: The antiserum was produced against synthesized non-phosphopeptide derived from human RelB around the phosphorylation site of serine 552 (L-L-S^P-P-G).
Purification: The antibody was affinity-purified from rabbit antiserum by affinity-chromatography using epitope-specific immunogen.
Specificity/Sensitivity RelB (Ab-552) antibody detects endogenous levels of total RelB protein.
Reactivity: Human, Mouse, Rat
Applications: WB: 1:500~1:1000
References: Marienfeld R, et al. (2001) Oncogene. 20 (56): 8142-7.
Charlotte S. Kaetzel1, et al. (2005) Immunological Reviews Volume 206: 83
Elwira Pysz, et al. (2006) J Immunol. 176:7447-55



For Research Use Only