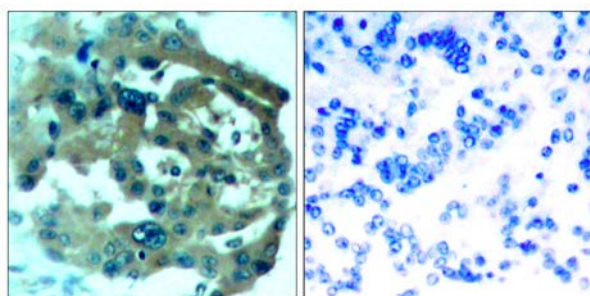




Merlin (Ab-518) Antibody

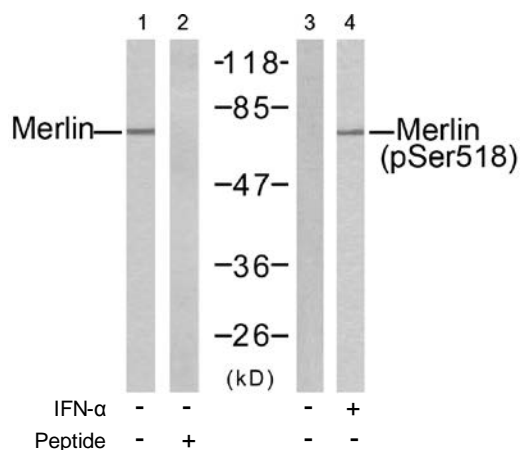
E021258

- Catalog Number:** E021258-1, E021258-2
- Amount:** 50µg/50µl, 100µg/100µl
- Swiss-Prot No. :** P35240
- Form of Antibody:** Rabbit IgG in phosphate buffered saline (without Mg^{2+} and Ca^{2+}), pH 7.4, 150mM NaCl, 0.02% sodium azide and 50% glycerol.
- Storage/Stability:** Store at -20°C/1 year
- Immunogen:** The antiserum was produced against synthesized non-phosphopeptide derived from human Merlin around the phosphorylation site of serine 518 (R-L-S^P-M-E).
- Purification:** The antibody was affinity-purified from rabbit antiserum by affinity-chromatography using epitope-specific immunogen.
- Specificity/Sensitivity:** Merlin (Ab-518) antibody detects endogenous levels of total Merlin protein.
- Reactivity:** Human, Mouse, Rat
- Applications:** WB: 1:500~1:1000 IHC: 1:50~1:100
- References:** Guang-Hui Xiao, et al. (2005) Mol. Cell. Biol ; 25: 2384 - 2394.
 Hi-Su Yang, et al. (2006) Cancer Res ; 66: 2708 - 2715.
 R Bohni, et al. (1994) J. Biol. Chem ; 269: 14541 - 14545.
 Adam J. Ratner, et al. (2001) J. Biol. Chem ; 276: 19267 - 19275.



Peptide - +

Immunohistochemical analysis of paraffin-embedded human lung carcinoma tissue, using Merlin (Ab-518) antibody (E021258).



Western blot analysis of extracts from HUVEC cells untreated or treated with IFN- α (100ng/ml, 15min), using Merlin (Ab-518) antibody (E021258, Line 1 and 2) and Merlin (phospho-Ser518) antibody (E011266, Line 3 and 4).