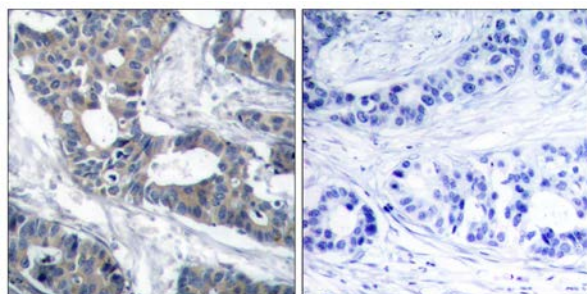




MEK1 (Ab-291) Antibody

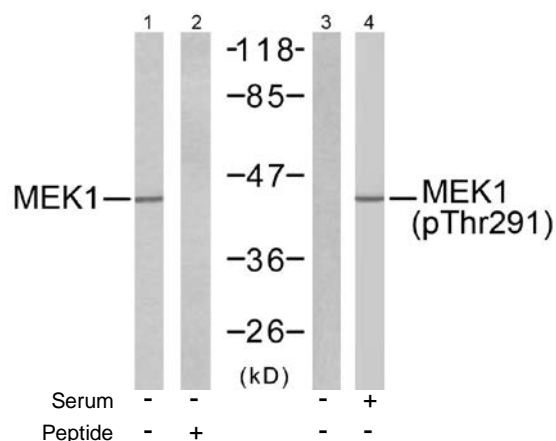
E021286

- Catalog Number:** E021286-1, E021286-2
- Amount:** 50µg/50µl, 100µg/100µl
- Swiss-Prot No. :** Q02750
- Form of Antibody:** Rabbit IgG in phosphate buffered saline (without Mg^{2+} and Ca^{2+}), pH 7.4, 150mM NaCl, 0.02% sodium azide and 50% glycerol.
- Storage/Stability:** Store at -20°C/1 year
- Immunogen:** The antiserum was produced against synthesized non-phosphopeptide derived from human MEK1 around the phosphorylation site of threonine 291 (P-R-T^P-P-G).
- Purification:** The antibody was affinity-purified from rabbit antiserum by affinity-chromatography using epitope-specific immunogen.
- Specificity/Sensitivity:** MEK1 (Ab-291) antibody detects endogenous levels of total MEK1 protein.
- Reactivity:** Human, Mouse, Rat
- Applications:** WB: 1:500~1:1000 IHC: 1:50~1:100
- References:** Kevin D. Burroughs, et.al. (2003) Mol. Cancer Res ; 1: 312.
Michael J. Piatelli, et.al. (2002) J. Biol. Chem ; 277: 12144 - 12150.
Margaret M. Morgan, et.al. (2001) J. Immunol ; 167: 5708.
Herbert Schramek, et.al. (2003) Am J Physiol Cell Physiol ; 285: C652 - C661.



Peptide - +

Immunohistochemical analysis of paraffin-embedded human breast carcinoma tissue using MEK1 (Ab-291) antibody (E021286).



Western blot analysis of extracts from 293 cells untreated or treated with 10% serum, using MEK1 (Ab-291) antibody (E021286, Line 1 and 2) and MEK1 (phospho-Thr291) antibody (E011294, Line 3 and 4).