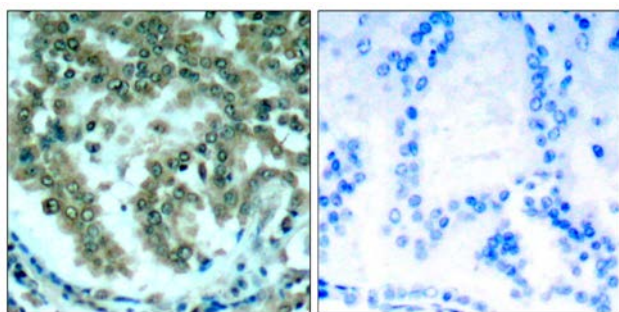




## PKCθ (Ab-676) Antibody

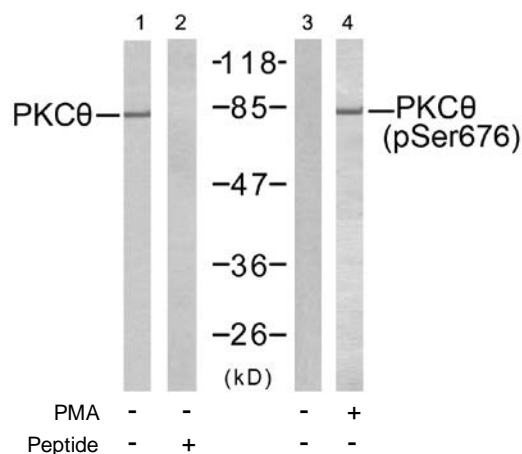
E021289

- Catalog Number:** E021289-1, E021289-2
- Amount:** 50µg/50µl, 100µg/100µl
- Swiss-Prot No. :** Q04759
- All Names:** PRKCQ , Protein kinase C theta type
- Form of Antibody:** Rabbit IgG in phosphate buffered saline (without Mg<sup>2+</sup> and Ca<sup>2+</sup>), pH 7.4, 150mM NaCl, 0.02% sodium azide and 50% glycerol.
- Storage/Stability:** Store at -20 °C/1 year
- Immunogen:** The antiserum was produced against synthesized non-phosphopeptide derived from human PKCθ around the phosphorylation site of serine 676 (R-L-S<sup>P</sup>-F-A).
- Purification:** The antibody was affinity-purified from rabbit antiserum by affinity-chromatography using epitope-specific immunogen.
- Specificity/Sensitivity:** PKCθ (Ab-676) antibody detects endogenous levels of total PKCθ protein.
- Reactivity:** Human, Mouse, Rat
- Applications:** WB: 1:500~1:1000 IHC: 1:50-1:100
- References:** Kristof Van Kolen, et al. (2006) FEBS J ; 273: 1843 - 1854.  
 Martin Villalba, et al. (2002) J. Cell Biol ; 157: 253.  
 Jie Zhang, et al. (2004) J. Biol. Chem ; 279: 22118 - 22123.  
 Castro AF, et al. (1998) Am J Physiol Cell Physiol; 275: C113 - C119.



Peptide - +

Immunohistochemical analysis of paraffin-embedded human lung carcinoma tissue, using PKCθ (Ab-676) antibody (E021289).



Western blot analysis of extracts from Jurkat cells untreated or treated with PMA (1ng/ml, 5min), using PKCθ (Ab-676) antibody (E021289, Line 1 and 2) and PKCθ (phospho-Ser676) antibody (E011297, Line 3 and 4).