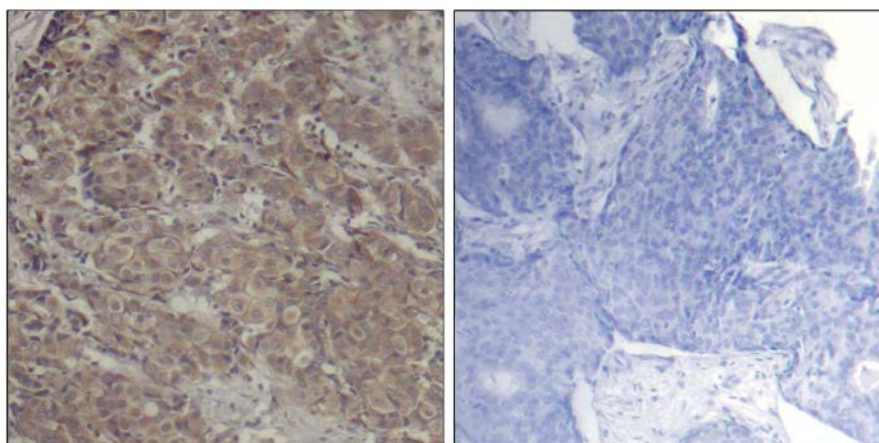




## CREB (Ab-142) Antibody

**E021300**

- Catalog Number:** E021300-1, E021300-2  
**Amount:** 50µg/50µl, 100µg/100µl  
**Swiss-Prot No. :** P16220  
**Form of Antibody:** Rabbit IgG in phosphate buffered saline (without  $Mg^{2+}$  and  $Ca^{2+}$ ), pH 7.4, 150mM NaCl, 0.02% sodium azide and 50% glycerol.  
**Storage/Stability:** Store at -20°C/1 year  
**Immunogen:** The antiserum was produced against synthesized non-phosphopeptide derived from human CREB around the phosphorylation site of serine 142 (D-L-S<sup>P</sup>-S-D).  
**Purification:** The antibody was affinity-purified from rabbit antiserum by affinity-chromatography using epitope-specific immunogen.  
**Specificity/Sensitivity:** CREB (Ab-142) Antibody detects endogenous levels of total CREB protein.  
**Reactivity:** Human, Mouse, Rat  
**Applications:** IHC: 1:50~1:100  
**References:** Chrystelle V. Garat, et al. (2006) Mol. Cell. Biol ; 26: 4934 - 4948.  
Lilah Rothem, et al. (2004) Mol. Pharmacol ; 66: 1536 - 1543.  
Darren R. Tyson, et al. (2002) Endocrinology; 143: 674.  
Kyung-Woo Park, et al. (2003) Arterioscler. Thromb. Vasc. Biol ; 23: 1364.



Peptide

-

+

Immunohistochemical analysis of paraffin-embedded human breast carcinoma tissue using CREB (Ab-142) Antibody (E021300).

**For Research Use Only**