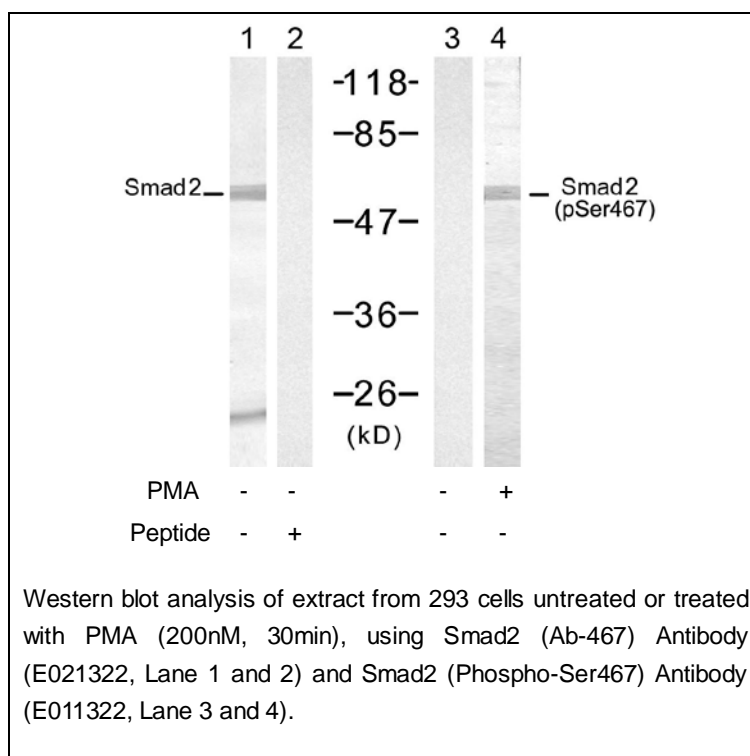




## Smad2 (Ab-467) Antibody

E021322

- Catalog Number:** E021322-1, E021322-2  
**Amount:** 50µg/50µl, 100µg/100µl  
**Swiss-Prot No. :** Q15796  
**Form of Antibody:** Rabbit IgG in phosphate buffered saline (without  $Mg^{2+}$  and  $Ca^{2+}$ ), pH 7.4, 150mM NaCl, 0.02% sodium azide and 50% glycerol.  
**Storage/Stability:** Store at -20°C/1 year  
**Immunogen:** The antiserum was produced against synthesized non-phosphopeptide derived from human Smad2 around the phosphorylation site of serine 467 (C-S-S-M-S<sup>P</sup>).  
**Purification:** The antibody was affinity-purified from rabbit antiserum by affinity-chromatography using epitope-specific immunogen.  
**Specificity/Sensitivity:** Smad2 (Ab-467) Antibody detects endogenous levels of total Smad2 protein.  
**Reactivity:** Human, Mouse, Rat  
**Applications:** WB: 1:500~1:1000  
**References:** Sang Gyun Kim et al. (2004) Mol Biol Cell. February; 15(2): 420–434.  
Rebecca A. Randall et al. (2004) Mol Cell Biol. February; 24(3): 1106–1121.  
Kimberly A Brown et al. (2004) Breast Cancer Res.; 6(3): R215–R231.



**For Research Use Only**