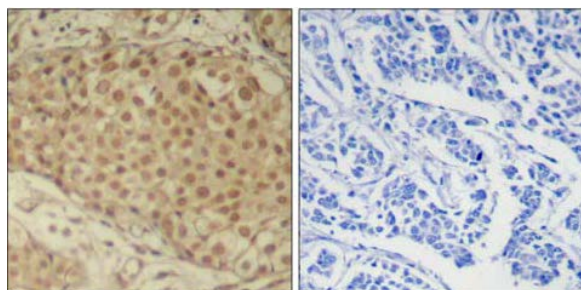




Smad2 (Ab-220) Antibody

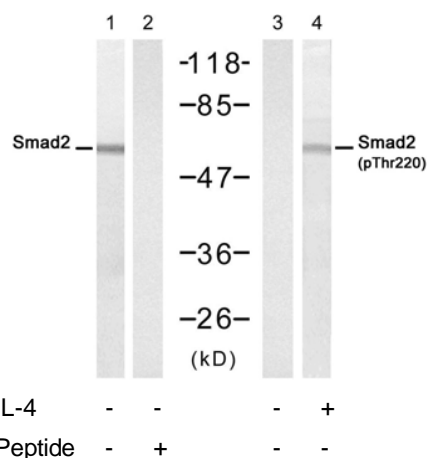
E021323

- Catalog Number:** E021323-1, E021323-2
- Amount:** 50µg/50µl, 100µg/100µl
- Form of Antibody:** Rabbit IgG in phosphate buffered saline (without Mg²⁺ and Ca²⁺), pH 7.4, 150mM NaCl, 0.02% sodium azide and 50% glycerol.
- Storage/Stability:** Store at -20°C/1 year
- Immunogen:** The antiserum was produced against synthesized non-phosphopeptide derived from human Smad2 around the phosphorylation site of threonine 220 (P-E-T^P-P-P).
- Purification:** The antibody was affinity-purified from rabbit antiserum by affinity-chromatography using epitope-specific immunogen.
- Specificity/Sensitivity:** Smad2 (Ab-220) Antibody detects endogenous levels of total Smad2 protein.
- Reactivity:** Human, Mouse, Rat
- Applications:** WB: 1:500~1:1000 IHC: 1:50~1:100
- Swiss-Prot No. :** Q15796
- References:** Sang Gyun Kim et al. (2004) Mol Biol Cell. February; 15(2): 420–434.
Rebecca A. Randall et al. (2004) Mol Cell Biol. February; 24(3): 1106–1121.
Kimberly A Brown et al. (2004) Breast Cancer Res.; 6(3): R215–R231.



Peptide - +

Immunohistochemical analysis of paraffin-embedded human breast carcinoma tissue using Smad2 (Ab-220) Antibody (E021323).



Western blot analysis of extract from HeLa cells untreated or treated with IL-4(100ng/mL, 30min), using Smad2 (Ab-220) Antibody (E021323, Lane 1 and 2) and Smad2 (Phospho-Thr220) Antibody (E011323, Lane 3 and 4).

For Research Use Only