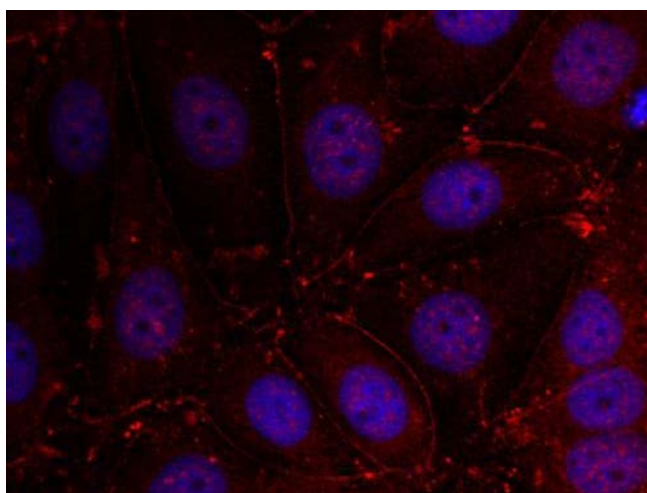




Her3/ErbB3 (Ab-1289) Antibody

E021509

- Catalog Number:** E021509-1, E021509-2
- Amount:** 50µg/50µl, 100µg/100µl
- Form of Antibody:** Rabbit IgG in phosphate buffered saline (without Mg^{2+} and Ca^{2+}), pH 7.4, 150mM NaCl, 0.02% sodium azide and 50% glycerol.
- Storage/Stability:** Store at -20°C/1 year
- Immunogen:** The antiserum was produced against synthesized non-phosphopeptide derived from human Her3/ErbB3 around the phosphorylation site of Tyr1289 (Q-G-Y^P-E-E).
- Purification:** The antibody was affinity-purified from rabbit antiserum by affinity-chromatography using epitope-specific phosphopeptide. The antibody against non-phosphopeptide was removed by chromatography using non-phosphopeptide corresponding to the phosphorylation site.
- Specificity/Sensitivity:** Her3/ErbB3 (Ab-1289) Antibody detects endogenous levels of total Her3/ErbB3 protein.
- Reactivity:** Human
- Applications:** IF:1:100~1:200
- Swiss-Prot No. :** P21860
- References:** Yarden, Y. and Sliwkowski, M.X. (2001) Nature Rev. Mol. Cell. Biol. 2, 127-137.
Guy, P.M. et al. (1994) Proc. Natl. Acad. Sci. USA 91, 8132-8136.
Songyang, Z. et al. (1993) Cell 72, 767-778.
Kim, H.H. et al. (1994) J. Biol. Chem. 269, 24747-24755.



Immunofluorescence staining of methanol-fixed MCF cells using Her3/ErbB3 (Ab-1289) Antibody (E021509, Red).

For Research Use Only