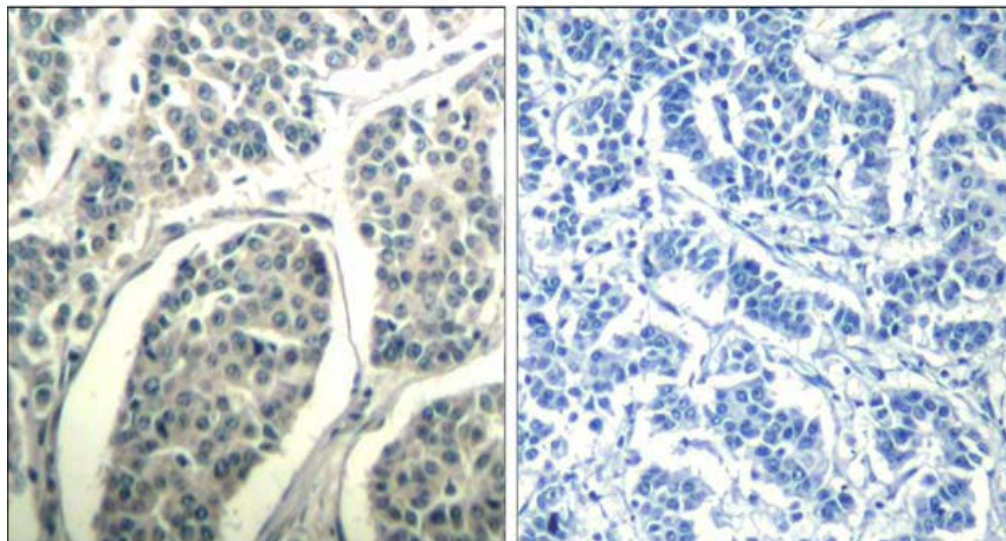




ABL1/2 (Ab-393/429) Antibody

E021530

- Catalog Number:** E021530-1, E021530-2
- Amount:** 50µg/50µl, 100µg/100µl
- Form of Antibody:** Rabbit IgG in phosphate buffered saline (without Mg²⁺ and Ca²⁺), pH 7.4, 150mM NaCl, 0.02% sodium azide and 50% glycerol.
- Storage/Stability:** Store at -20°C/1 year
- Immunogen:** The antiserum was produced against synthesized non-phosphopeptide derived from human ABL1/2 around the phosphorylation site of tyrosine 393/429 (D-T-Y^P-T-A).
- Purification:** The antibody was affinity-purified from rabbit antiserum by affinity-chromatography using epitope-specific immunogen.
- Specificity/Sensitivity:** ABL1/2 (Ab-393/429) Antibody detects endogenous levels of total ABL1/2 protein.
- Reactivity:** Human, Mouse
- Applications:** IHC: 1:50~100
- Swiss-Prot No. :** P00519 P42684
- References:** Wang, J.Y. et al. (2000) *Oncogene* 19, 5643-5650.
Danial, N.N. et al. (2000) *Oncogene* 19, 2523-2531.
Brasher, B.B. et al. (2000) *J. Biol. Chem.* 275, 35631-35637.
Pluk, H. et al. (2002) *Cell* 108, 247-259.



Peptide -

+

Immunohistochemical analysis of paraffin-embedded human breast carcinoma tissue using ABL1/2 (Ab-393/429) Antibody (E021530).

For Research Use Only