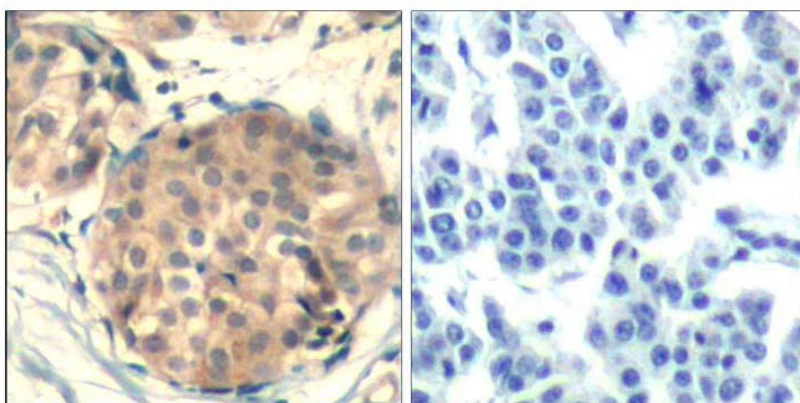




c-kit (Ab-936) Antibody

E021539

- Catalog Number:** E021539-1, E021539-2
Amount: 50µg/50µl, 100µg/100µl
Form of Antibody: Rabbit IgG in phosphate buffered saline (without Mg^{2+} and Ca^{2+}), pH 7.4, 150mM NaCl, 0.02% sodium azide and 50% glycerol.
Storage/Stability: Store at -20°C/1 year
Immunogen: The antiserum was produced against synthesized non-phosphopeptide derived from human c-kit around the phosphorylation site of tyrosine 936 (H-I-Y^P-S-N).
Purification: The antibody was affinity-purified from rabbit antiserum by affinity-chromatography using epitope-specific immunogen.
Specificity/Sensitivity: c-kit (Ab-936) Antibody detects endogenous levels of total c-kit protein.
- Reactivity:** Human
Applications: IHC: 1:50~1:100
Swiss-Prot No. : P10721
References: Martin, F.H. et al. (1990) *Cell* 63, 203-11.
Blume-Jensen, P. et al. (2000) *Nat Genet* 24, 157-62.
Gommerman, J.L. et al. (1997) *J Biol Chem* 272, 30519-25.
Nocka, K. et al. (1990) *EMBO J* 9, 1805-13.



Peptide

-

+

Immunohistochemical analysis of paraffin-embedded human breast carcinoma tissue using c-kit (Ab-936) Antibody (E021539).

For Research Use Only