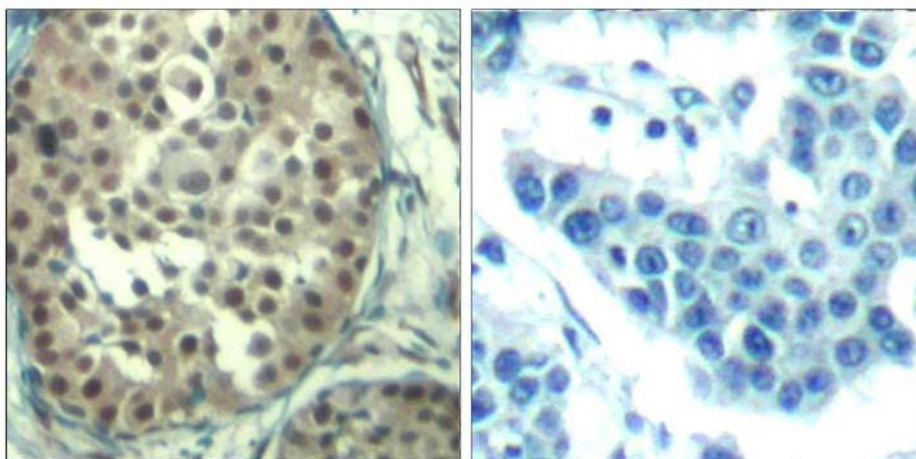




## Cyclin E1 (Ab-395) Antibody

E021541

- Catalog Number:** E021541-1, E021541-2  
**Amount:** 50µg/50µl, 100µg/100µl  
**Form of Antibody:** Rabbit IgG in phosphate buffered saline (without  $Mg^{2+}$  and  $Ca^{2+}$ ), pH 7.4, 150mM NaCl, 0.02% sodium azide and 50% glycerol.  
**Storage/Stability:** Store at -20°C/1 year  
**Immunogen:** The antiserum was produced against synthesized non-phosphopeptide derived from human Cyclin E1 around the phosphorylation site of threonine 395 (L-L-T<sup>P</sup>-P-P).  
**Purification:** The antibody was affinity-purified from rabbit antiserum by affinity-chromatography using epitope-specific immunogen.  
**Specificity/Sensitivity:** Cyclin E1 (Ab-395) Antibody detects endogenous levels of total Cyclin E1 protein.
- Reactivity:** Human  
**Applications:** IHC: 1:50~1:100  
**Swiss-Prot No. :** P24864  
**References:** Lauper, N. et al. (1998) *Oncogene* 17, 2637-2643.  
Won, K.A. and Reed, S.I. (1996) *EMBO J.* 15, 4182-4193.  
Ye, X. et al. (2004) *J. Biol. Chem.* 279, 50110-50119.



Peptide

-

+

Immunohistochemical analysis of paraffin-embedded human breast carcinoma tissue using Cyclin E1 (Ab-395) Antibody (E021541).

**For Research Use Only**