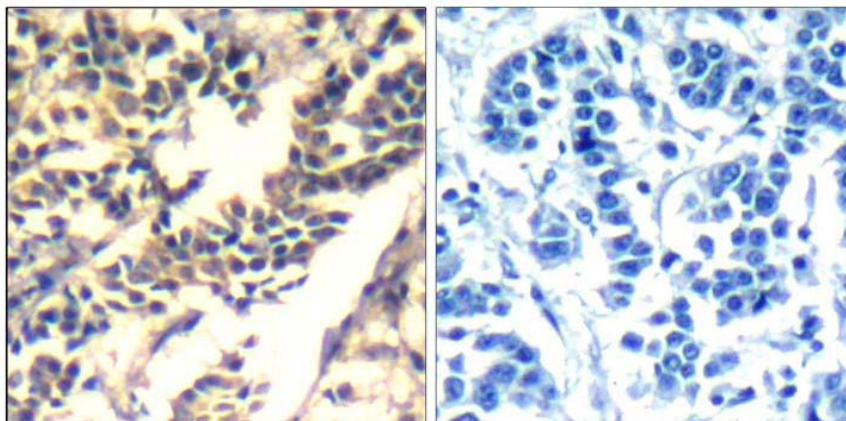




c-Cbl (Ab-700) Antibody

E021549

- Catalog Number:** E021549-1, E021549-2
Amount: 50µg/50µl, 100µg/100µl
Form of Antibody: Rabbit IgG in phosphate buffered saline (without Mg^{2+} and Ca^{2+}), pH 7.4, 150mM NaCl, 0.02% sodium azide and 50% glycerol.
Storage/Stability: Store at -20°C/1 year
Immunogen: The antiserum was produced against synthesized non-phosphopeptide derived from human c-Cbl around the phosphorylation site of tyrosine 700 (T-E-Y^P-M-T).
Purification: The antibody was affinity-purified from rabbit antiserum by affinity-chromatography using epitope-specific immunogen.
Specificity/Sensitivity: c-Cbl (Ab-700) Antibody detects endogenous levels of total c-Cbl protein.
- Reactivity:** Human
Applications: IHC: 1:50~1:100
Swiss-Prot No. : P22681
References: Blake, T.J. et al. (1991) *Oncogene* 6, 653-657.
Thien, C.B. and Langdon, W.Y. (1998) *Immunol. Cell Biol.* 76, 473-482.
Kamei, T. et al. (2000) *Int. J. Oncol.* 17, 335-339.
Hunter, C. et al. (1999) *J. Biol. Chem.* 274, 2097-2106.



Peptide

-

+

Immunohistochemical analysis of paraffin-embedded human breast carcinoma tissue using c-Cbl (Ab-700) Antibody (E021549).

For Research Use Only