



AMPKbeta1 (Ab-182) Antibody

E022004

Catalog Number: E022004-1, E022004-2

Amount: 50µg/50µl, 100µg/100µl

Form of Antibody: Rabbit IgG in phosphate buffered saline (without Mg^{2+} and Ca^{2+}), pH 7.4, 150mM NaCl, 0.02% sodium azide and 50% glycerol.

Storage/Stability: Store at -20°C/1 year

Immunogen: The antiserum was produced against synthesized non-phosphopeptide derived from human AMPKbeta1 around the phosphorylation site of serine 182.

Purification: The antibody was affinity-purified from rabbit antiserum by affinity-chromatography using epitope-specific immunogen.

Specificity/Sensitivity: AMPKbeta1 (Ab-182) antibody detects endogenous levels of total AMPKbeta1 protein.

Reactivity: Human, Mouse, Rat

Applications: WB: 1:500~1:1000 IHC: 1:50~1:100 ELISA: 1:20000

Swiss-Prot No. : Q9Y478

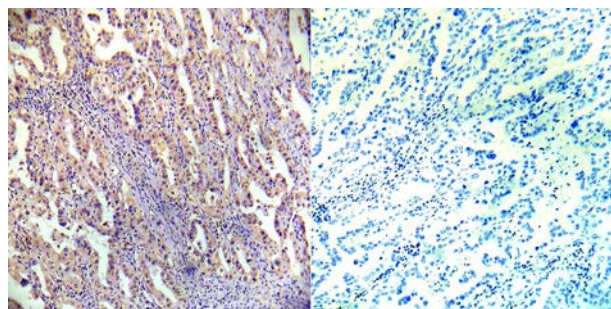
References: Warden, S.M. et al. (2001) Biochem. J. 354, 275-283.

Yin W, Mu J, Birnbaum MJ (2003) J Biol Chem 278, 43074-80

Hardie, D.G. (2004) J. Cell Sci. 117, 5479-5487.

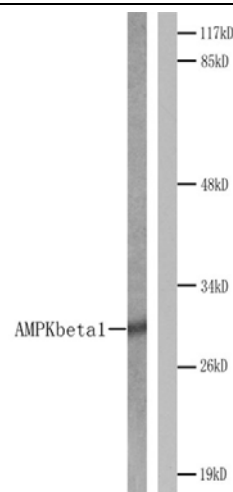
Shaw, R. et al. (2004) Proc. Natl. Acad. Sci. USA 101, 3329-3335.

Watt MJ, et al. (2006) Am J Physiol Endocrinol Metab 290, E500-8



Peptide - +

Immunohistochemical analysis of paraffin-embedded human lung carcinoma tissue using AMPKbeta1 (Ab-182) antibody (E022004).



Western blot analysis of extracts from COS7 cell. Left: Using AMPKbeta1 (Ab-182) antibody (E022004). Right: Using the same antibody preincubated with synthesized peptide.

For Research Use Only