



## FOXO3A (Ab-253) Antibody

**E022020**

**Catalog Number:** E022020-1, E022020-2

**Amount:** 50µg/50µl, 100µg/100µl

**Form of Antibody:** Rabbit IgG in phosphate buffered saline (without  $Mg^{2+}$  and  $Ca^{2+}$ ), pH 7.4, 150mM NaCl, 0.02% sodium azide and 50% glycerol.

**Storage/Stability:** Store at -20°C/1 year

**Immunogen:** The antiserum was produced against synthesized non-phosphopeptide derived from human FOXO3A around the phosphorylation site of serine 253.

**Purification:** The antibody was affinity-purified from rabbit antiserum by affinity-chromatography using epitope-specific immunogen.

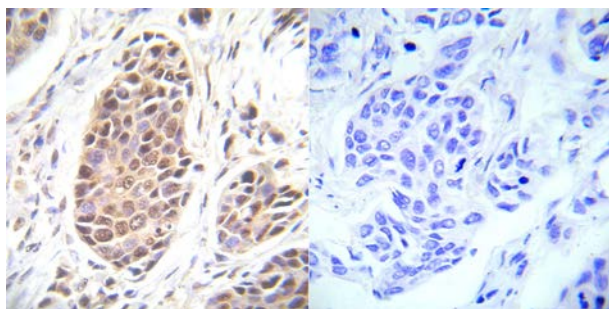
**Specificity/Sensitivity:** FOXO3A (Ab-253) antibody detects endogenous levels of total FOXO3A protein.

**Reactivity:** Human, Mouse, Rat

**Applications:** WB: 1:500~1:1000 IHC: 1:50~1:100 ELISA: 1:20000

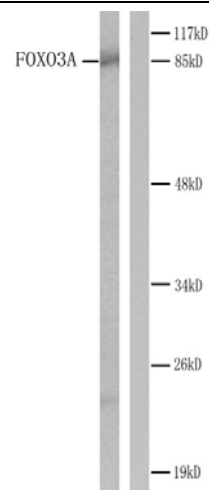
**Swiss-Prot No. :** O43524

**References:** Li M, Chiu JF, Mossman BT, Fukagawa NK (2006) D J Biol Chem 281, 40429-39  
Essafi A, et al. (2005) Oncogene 24, 2317-29  
Seoane, J. et al. (2004) Cell 117, 211-223.  
Brunet A, et al. (2001) Mol Cell Biol 21, 952-65  
Brunet A, et al. (1999) Cell 96, 857-68



Peptide                      -                      +

Immunohistochemical analysis of paraffin-embedded human breast carcinoma tissue using FOXO3A (Ab-253) antibody (E022020).



Western blot analysis of extracts from NIH/3T3 cells treated with using Serum. Left: Using FOXO3A (Ab-253) antibody (E022020). Right: Using the same antibody preincubated with synthesized peptide.

**For Research Use Only**