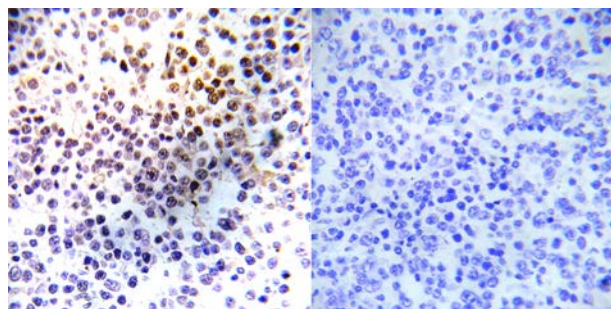




Histone H3.1 (Ab-28) Antibody

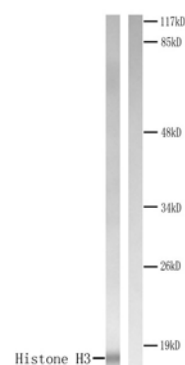
E022023

- Catalog Number:** E022023-1, E022023-2
- Amount:** 50µg/50µl, 100µg/100µl
- Form of Antibody:** Rabbit IgG in phosphate buffered saline (without Mg^{2+} and Ca^{2+}), pH 7.4, 150mM NaCl, 0.02% sodium azide and 50% glycerol.
- Storage/Stability:** Store at -20°C/1 year
- Immunogen:** The antiserum was produced against synthesized non-phosphopeptide derived from human Histone H3.1 around the phosphorylation site of serine 28.
- Purification:** The antibody was affinity-purified from rabbit antiserum by affinity-chromatography using epitope-specific immunogen.
- Specificity/Sensitivity:** Histone H3.1 (Ab-28) antibody detects endogenous levels of total Histone H3.1 protein.
- Reactivity:** Human, Mouse, Rat
- Applications:** WB: 1:500~1:1000 IHC: 1:50~1:100 ELISA: 1:20000
- Swiss-Prot No. :** P68431
- References:** Bonenfant D, et al. (2007) Mol Cell Proteomics 6, 1917-32
 Dai J, Sultan S, Taylor SS, Higgins JM (2005) Genes Dev 19, 472-88
 Strahl, B.D. and Allis, C.D. (2000) Nature 403, 41-45.
 Cheung, P. et al. (2000) Cell 103, 263-271.
 Hendzel, M.J. et al. (1997) Chromosoma 106, 348-360.



Peptide - +

Immunohistochemical analysis of paraffin-embedded human malignant lymphoma tissue using Histone H3.1 (Ab-28) antibody (E022023).



Western blot analysis of extracts from COLO205 cells. Left: Using Histone H3.1 (Ab-28) antibody (E022023). Right: Using the same antibody preincubated with synthesized peptide.

For Research Use Only