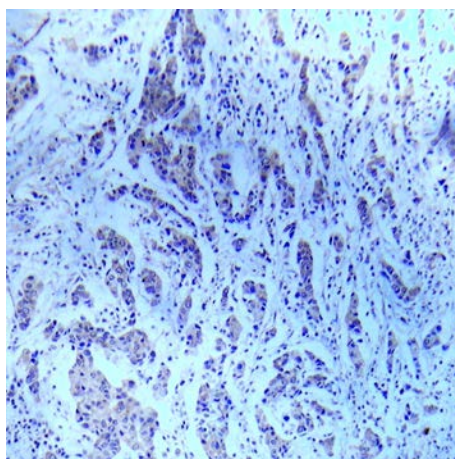




ASK1 (Ab-83) Antibody

E022058

- Catalog Number:** E022058-1, E022058-2
- Amount:** 50µg/50µl, 100µg/100µl
- Form of Antibody:** Rabbit IgG in phosphate buffered saline (without Mg^{2+} and Ca^{2+}), pH 7.4, 150mM NaCl, 0.02% sodium azide and 50% glycerol.
- Storage/Stability:** Store at -20°C/1 year
- Immunogen:** The antiserum was produced against synthesized non-phosphopeptide derived from human ASK1 around the phosphorylation site of serine 83.
- Purification:** The antibody was affinity-purified from rabbit antiserum by affinity-chromatography using epitope-specific immunogen.
- Specificity/Sensitivity:** ASK1 (Ab-83) antibody detects endogenous levels of total ASK1 protein.
- Reactivity:** Human
- Applications:** WB: 1:500~1:1000 IHC: 1:50~1:100 ELISA: 1:20000
- Swiss-Prot No. :** Q99683
- References:** Mochizuki T, et al. (2006) Oncogene 25, 3699-707.
Song JJ, Lee YJ (2005) J Biol Chem 280, 26845-55.
Ichijo, H. et al. (1997) Science 275, 90-94.
Wang, X.S. et al. (1996) J. Biol. Chem. 271, 31607-31611.
Matsuzawa, A. and Ichijo, H. (2001) J. Biochem. (Tokyo) 130, 1-8.



Immunohistochemical analysis of paraffin- embedded human breast carcinoma tissue using ASK1 (Ab-83) Antibody (E022058).

For Research Use Only