



CHK1 (Ab-317) Antibody

E022066

Catalog Number: E022066-1, E022066-2

Amount: 50µg/50µl, 100µg/100µl

Form of Antibody: Rabbit IgG in phosphate buffered saline (without Mg^{2+} and Ca^{2+}), pH 7.4, 150mM NaCl, 0.02% sodium azide and 50% glycerol.

Storage/Stability: Store at -20°C/1 year

Immunogen: The antiserum was produced against synthesized non-phosphopeptide derived from human CHK1 around the phosphorylation site of serine 317.

Purification: The antibody was affinity-purified from rabbit antiserum by affinity-chromatography using epitope-specific immunogen.

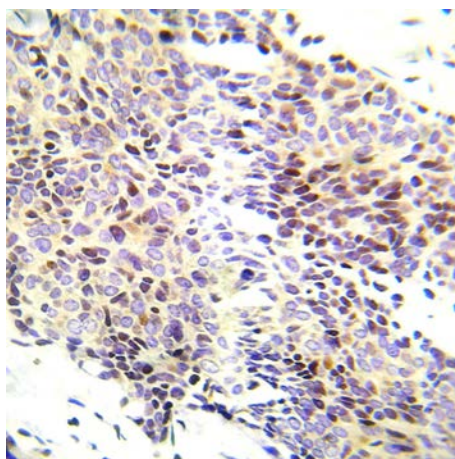
Specificity/Sensitivity: CHK1 (Ab-317) antibody detects endogenous levels of total CHK1 protein.

Reactivity: Human, Rat

Applications: WB: 1:500~1:1000 IHC: 1:50~1:100 ELISA: 1:20000

Swiss-Prot No. : O14757

References: Dephore N, et al. (2008) Proc Natl Acad Sci U S A 105, 10762-7.
Cruet-Hennequart S, et al. (2008) DNA Repair (Amst) 7, 582-96.
Matsuoka S, et al. (2007) Science 316, 1160-6.
Carlessi L, et al. (2007) Mol Cancer Ther 6, 935-44.
Stiff T, et al. (2006) EMBO J 25, 5775-82.



Immunohistochemical analysis of paraffin- embedded human lung adenocarcinoma tissue using CHK1 (Ab-317) Antibody (E022066).

For Research Use Only