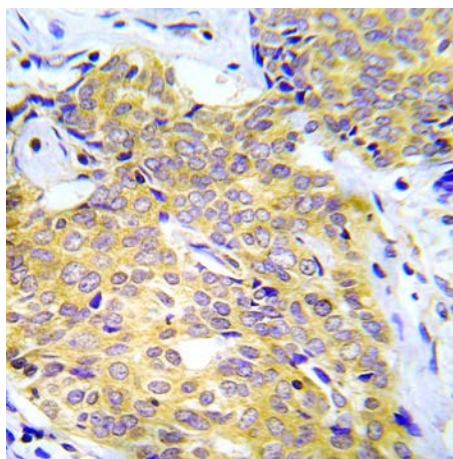




## CrkL (Ab-207) Antibody

E022071

- Catalog Number:** E022071-1, E022071-2
- Amount:** 50µg/50µl, 100µg/100µl
- Form of Antibody:** Rabbit IgG in phosphate buffered saline (without  $Mg^{2+}$  and  $Ca^{2+}$ ), pH 7.4, 150mM NaCl, 0.02% sodium azide and 50% glycerol.
- Storage/Stability:** Store at -20°C/1 year
- Immunogen:** The antiserum was produced against synthesized non-phosphopeptide derived from human CrkL around the phosphorylation site of tyrosine 207.
- Purification:** The antibody was affinity-purified from rabbit antiserum by affinity-chromatography using epitope-specific immunogen.
- Specificity/Sensitivity:** CrkL (Ab-207) antibody detects endogenous levels of total CrkL protein.
- Reactivity:** Human, Mouse, Rat
- Applications:** WB: 1:500~1:1000      IHC: 1:50~1:100      ELISA: 1:20000
- Swiss-Prot No. :** P46109
- References:** Rush J., et al. (2005) Nat. Biotechnol. 23:94-101.  
Guo A, et al. (2008) Proc Natl Acad Sci U S A 105, 692-7.  
Wolf-Yadlin A, et al. (2006) Mol Syst Biol 2, 54.  
Satter, M. and Salgia, R. (1998) Leukemia 12, 637-644.  
Feller, S. M. et al. (1998) J. Cell. Physiol. 177, 535-552.  
Kiyokawa, E. et al. (1997) Crit. Rev. Oncog. 8, 329-342.



Immunohistochemical analysis of paraffin- embedded human lung adenocarcinoma tissue using CrkL (Ab-207) Antibody (E022071).

**For Research Use Only**