



HDAC1 (Ab-421/423) Antibody

E022085

Catalog Number: E022085-1, E022085-2

Amount: 50µg/50µl, 100µg/100µl

Form of Antibody: Rabbit IgG in phosphate buffered saline (without Mg^{2+} and Ca^{2+}), pH 7.4, 150mM NaCl, 0.02% sodium azide and 50% glycerol.

Storage/Stability: Store at -20°C/1 year

Immunogen: The antiserum was produced against synthesized non-phosphopeptide derived from human HDAC1 around the phosphorylation site of serine 421/423.

Purification: The antibody was affinity-purified from rabbit antiserum by affinity-chromatography using epitope-specific immunogen.

Specificity/Sensitivity: HDAC1 (Ab-421/423) antibody detects endogenous levels of total HDAC1 protein.

Reactivity: Human, Mouse, Rat

Applications: WB: 1:500~1:1000 IHC: 1:50~1:100 ELISA: 1:20000

Swiss-Prot No. : Q13547

References: Dephoure N, et al. (2008) Proc Natl Acad Sci U S A 105, 10762-7.

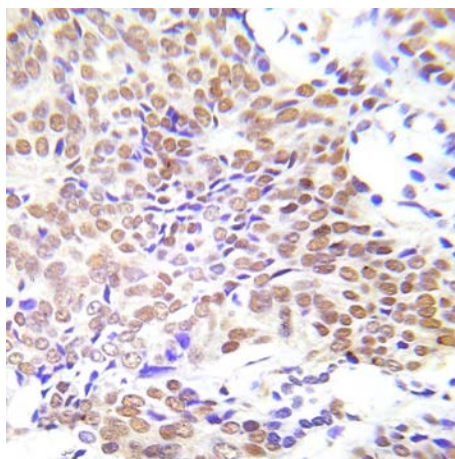
Han G, et al. (2008) Proteomics 8, 1346-61.

Molina H, et al. (2007) Proc Natl Acad Sci U S A 104, 2199-204.

Olsen JV, et al. (2006) Cell 127, 635-48.

Pflum MK, Tong JK, et al. (2001) J Biol Chem 276, 47733-41.

Marmorstein, R. et al. (2001) Cell. Mol. Life Sci. 58, 693-703.



Immunohistochemical analysis of paraffin- embedded human lung adenocarcinoma tissue using HDAC1 (Ab-421/423) Antibody (E022085).

For Research Use Only