



## IRS-1 (Ab-612) Antibody

E022093

**Catalog Number:** E022093-1, E022093-2

**Amount:** 50µg/50µl, 100µg/100µl

**Form of Antibody:** Rabbit IgG in phosphate buffered saline (without  $Mg^{2+}$  and  $Ca^{2+}$ ), pH 7.4, 150mM NaCl, 0.02% sodium azide and 50% glycerol.

**Storage/Stability:** Store at -20°C/1 year

**Immunogen:** The antiserum was produced against synthesized non-phosphopeptide derived from human IRS-1 around the phosphorylation site of serine 612 .

**Purification:** The antibody was affinity-purified from rabbit antiserum by affinity-chromatography using epitope-specific immunogen.

**Specificity/Sensitivity:** IRS-1 (Ab-612) antibody detects endogenous levels of total IKK-α/β protein.

**Reactivity:** Human, Mouse, Rat

**Applications:** WB: 1:500~1:1000 IHC: 1:50~1:100 ELISA: 1:20000

**Swiss-Prot No. :** P35569

**References:** Andreozzi F, et al. (2004) Endocrinology 145, 2845-57.

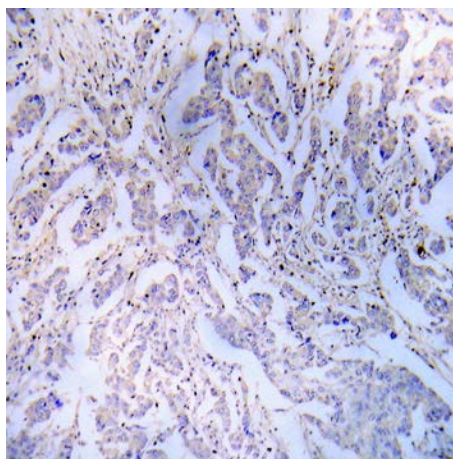
Esposito DL, Li Y, Cama A, Quon MJ (2001) Endocrinology 142, 2833-40.

Rikova K, et al. (2007) Cell 131, 1190-203.

Sun, X.J. et al. (1991) Nature 352, 73-77.

Sun, X.J. et al. (1992) J. Biol. Chem. 267, 22662-22672.

Myers Jr., M.G. et al. (1993) Endocrinology 132, 1421-1430.



Immunohistochemical analysis of paraffin- embedded human breast carcinoma tissue using IRS-1 (Ab-612) Antibody (E022093).

**For Research Use Only**