



BCL-10 Mouse Monoclonal Antibody

E10-20003

- Background:** Bcl-10 (B-cell CLL/lymphoma 10), also known as CLAP, Me10, CIPER, c-E10, CARMEN. Entrez Protein NP_003912. It is a protein containing a caspase recruitment domain (CARD). It plays an important role in apoptosis and activating NF-kappaB. The research suggested that it interacted with other CARD domain containing proteins including CARD9, 10, 11 and 14, which were thought to function as upstream regulators in NF-kappaB signaling. Bcl-10 is found to form a complex with MALT1 which encoded by another gene known to be translocated in MALT lymphoma. MALT1 and Bcl-10 are thought to synergize in the activation of NF-kappaB, and the deregulation of either of them may contribute to the same pathogenetic process that leads to the malignancy.
- Catalog Number:** E10-20003
- Amount:** 100µg/100µl
- Clone Number:** 4F8
- Species:** Mouse IgG1
- MW:** 26kDa
- Aliases:** CLAP; Me10; CIPER; c-E10; CARMEN
- Entrez Gene:** 8915
- Immunogen:** Purified recombinant fragment of human BCL-10 expressed in E. Coli.
- Storage:** Store at 4°C, for long term storage, store at -20°C
- Formulation:** Purified antibody in PBS containing 0.03% sodium azide.
- Species Reactivities:** Human; Mouse
- Tested Applications:** WB, IHC,IF, FCM, ELISA. Not yet tested in other applications. Determining optimal working dilutions by titration test.
- Application notes:** WB.1/500 - 1/2000, IHC.1/200 - 1/1000, IF.1/200 - 1/1000, FCM.1/200 - 1/400 ELISA. Propose dilution 1/10000.

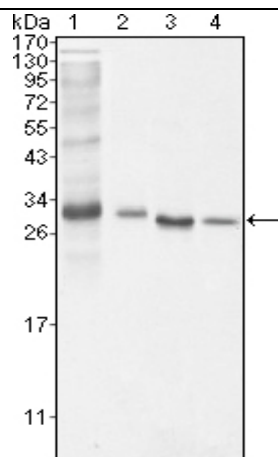


Figure 1. Western blot analysis using BCL10 mouse mAb against NIH/3T3 (1), HeLa (2), MCF-7 (3) and Jurka (4) cell lysate

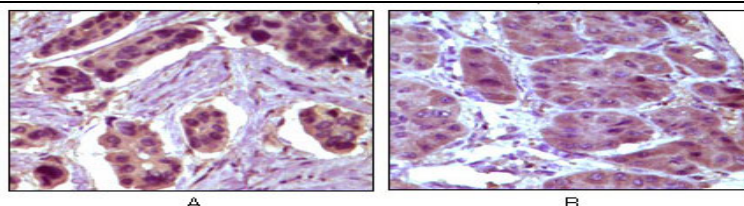


Figure 2. Immunohistochemical analysis of paraffin-embedded human breast carcinoma (A) and liver carcinoma (B), showing cytoplasmic localization using BCL10 mouse mAb with DAB staining.

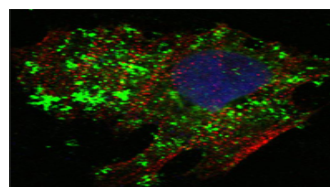


Figure 3. Confocal immunofluorescence analysis of HeLa (left) and NTERA-2 (right) cells using NPM mouse mAb (green). Red: Actin filaments have been labeled with DY-554 phalloidin.

For Research Use Only