



CD8 Mouse Monoclonal Antibody

E10-20008

Background: CD8 T cell surface antigen is heterodimer of an alpha and a beta chain linked by two disulfide bonds. It belongs to type I membrane protein. Selective expression of CD8 on a subset of T cells leads to CD8 T cell development. Through identifying cytotoxic/suppressor T-cells that interact with MHC class I bearing targets, CD8 is thought to play a role in the process of T-cell mediated killing. Veillette et al (1988) found the CD8 is associated with the internal membrane tyrosine-protein kinase p56lck.

Catalog Number: E10-20008

Amount: 100µg/100µl

Clone Number: RAVB3

Species: Mouse IgG1

Aliases: MAL; p32; Leu2; CD8A

Entrez Gene: 925

Immunogen: Purified recombinant fragment of human CD8 expressed in E. Coli.

Storage: Store at 4°C, for long term storage, store at -20°C

Formulation: Purified antibody in PBS containing 0.03% sodium azide.

Species Reactivities: Human

Tested Applications: FC, ELISA. Not yet tested in other applications. Determining optimal working dilutions by titration test.

Application notes: FC: 1/200 - 1/400, ELISA. Propose dilution 1/10000.

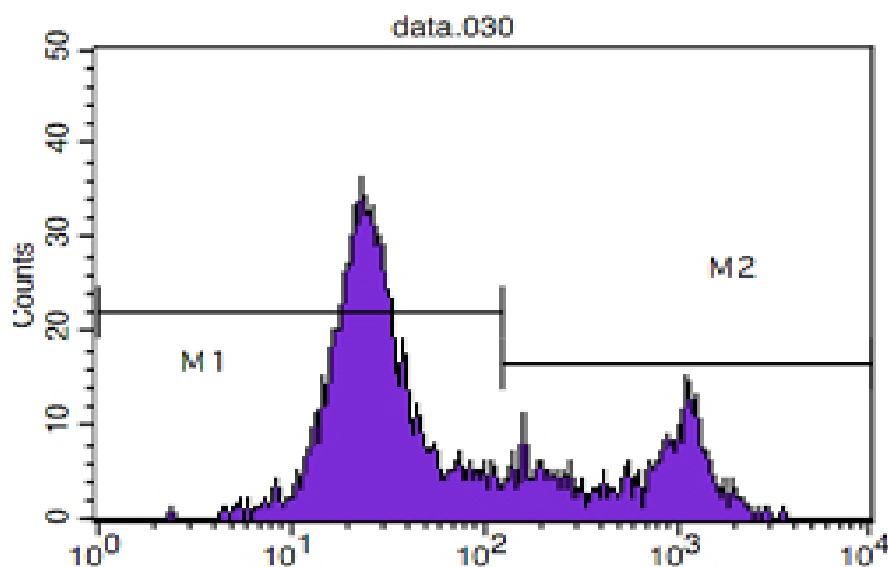


Figure 1. Flow cytometric analysis of blood T cells using CD8 mouse mAb (M2) and negative control (M1).

For Research Use Only