



## IL-1a Mouse Monoclonal Antibody

E10-20010

**Background:** Interleukin-1alpha is a member of the interleukin 1 cytokine family. It is a pleiotropic cytokine involved in various immune responses, inflammatory processes, and hematopoiesis. This cytokine is produced by monocytes and macrophages as a proprotein, which is proteolytically processed and released in response to cell injury, and thus induces apoptosis. IL-1 alpha and eight other interleukin 1 family genes form a cytokine gene cluster on chromosome 2. It has been suggested that the polymorphism of these genes is associated with rheumatoid arthritis and Alzheimer's disease

**Catalog Number:** E10-20010

**Amount:** 100µg/100µl

**Clone Number:** 1F3B3,3A6F11

**Species:** Mouse IgG2a

**Aliases:** IL1; IL-1A; IL1F1; IL1-ALPHA

**Entrez Gene:** 3552

**Immunogen:** Purified recombinant fragment of human IL1a expressed in E. Coli.

**Storage:** Store at 4°C, for long term storage, store at -20°C

**Formulation:** Purified antibody in PBS containing 0.03% sodium azide.

**Species Reactivities:** Human

**Tested Applications:** WB, ELISA. Not yet tested in other applications. Determining optimal working dilutions by titration test.

**Application notes:** WB: 1/500 - 1/2000, ELISA. Propose dilution 1/10000.

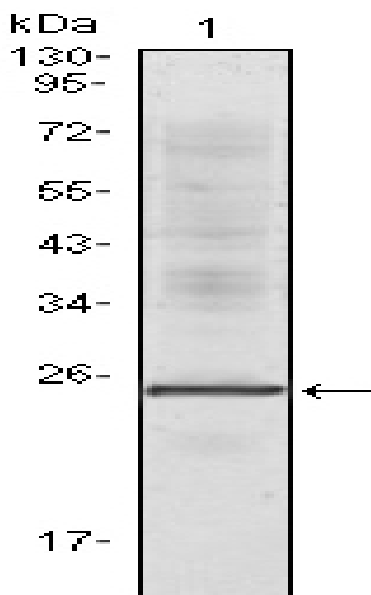


Figure 1. Western blot analysis using IL1a mouse mAb against truncated IL1a recombinant protein.

**For Research Use Only**