



IL-16 Mouse Monoclonal Antibody

E10-20012

Background: Interleukin-16, also known as lymphocyte chemoattractant factor (LCF), is a chemotactic cytokine that stimulates a migratory response in CD4+ lymphocytes, monocytes, and eosinophils through binding to the CD4 receptor. IL-16 induces human T-lymphocyte expression of interleukin 2 receptor and upregulates major histocompatibility complex II molecules on resting human T lymphocyte. It is able to render CD4+ T cells unresponsive to TCR/CD3 stimuli. Moreover, IL-16 inhibits the replication of T cell and monocyte tropic HIV strains in vitro.

Catalog Number: E10-20012

Amount: 100µg/100µl

Clone Number: 5D8

Species: Mouse IgG1

Aliases: IL16

Entrez Gene: 3603

Immunogen: Purified recombinant fragment of human IL-16 expressed in E. Coli.

Storage: Store at 4°C, for long term storage, store at -20°C

Formulation: Purified antibody in PBS containing 0.03% sodium azide.

Species Reactivities: Human

Tested Applications: WB, ELISA. Not yet tested in other applications. Determining optimal working dilutions by titration test.

Application notes: WB.1/500 - 1/2000, ELISA. Propose dilution 1/10000.

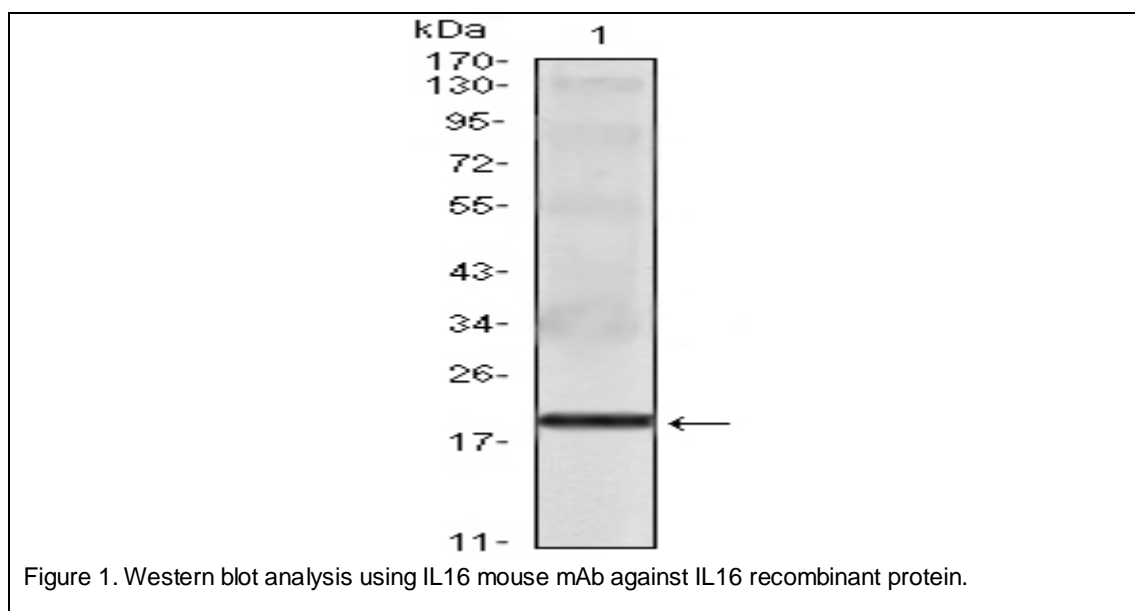


Figure 1. Western blot analysis using IL16 mouse mAb against IL16 recombinant protein.

For Research Use Only