



## MCP-1 Mouse Monoclonal Antibody

E10-20014

**Background:** Monocyte chemoattractant protein-1 (MCP-1) is a member of the chemokine-beta family of cytokines. The protein is structurally related to the CXC subfamily of cytokines. Members of this subfamily are characterized by two cysteines separated by a single amino acid. This cytokine displays chemotactic activity for monocytes and basophils but not for neutrophils or eosinophils. It has been implicated in the pathogenesis of diseases characterized by monocytic infiltrates, like psoriasis, rheumatoid arthritis and atherosclerosis. It binds to chemokine receptors CCR2 and CCR4. It may play a inportant role in the initiation and/or progression of pulmonary hypertension (PH). Blockade of a systemic MCP-1 signal pathway in vivo may prevent PH.

**Catalog Number:** E10-20014

**Amount:** 100µg/100µl

**Clone Number:** 1A7B8

**Species:** Mouse IgG1.kappa

**Aliases:** MCP1

**Entrez Gene:** 6347

**Immunogen:** Purified recombinant fragment of human MCP-1 expressed in E. Coli.

**Storage:** Store at 4°C, for long term storage, store at -20°C

**Formulation:** Purified antibody in PBS containing 0.03% sodium azide.

**Species Reactivities:** Human

**Tested Applications:** WB, ELISA. Not yet tested in other applications. Determining optimal working dilutions by titration test.

**Application notes:** WB.1/500 - 1/2000, ELISA. Propose dilution 1/10000.

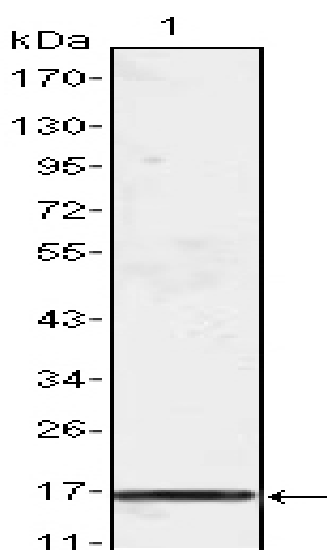


Figure 1. Western blot analysis using MCP1 mouse mAb against truncated MCP-1 recombinant protein.

**For Research Use Only**