



KSHV K8 α Mouse Monoclonal Antibody

E10-20015

Background: Kaposi's sarcoma-associated herpesvirus (KSHV) belongs to the gamma-(2)-herpesvirus subfamily and has been closely linked to the Kaposi's sarcoma, primary effusion lymphoma (PEL) and multicentric Castleman's disease. The genome of KSHV is 165-170 kb and contains at least 88 open reading frames. KSHV K8 and K8.1 open reading frames are juxtaposed and span from nucleotide (nt) 74850 to 76695 of the virus genome. A K8 pre-mRNA overlaps the entire K8.1 coding region, and alternative splicing of KSHV K8 and K8.1 pre-mRNAs each produces three isoforms (α , β , and γ) of the mRNAs.

Catalog Number: E10-20015

Amount: 100 μ g/100 μ l

Clone Number: 8C12G10G1

Species: Mouse IgG2a

Aliases: K8

Entrez Gene: 4961462

Immunogen: Purified recombinant fragment of KSHV K8 α expressed in E. Coli.

Storage: Store at 4°C, for long term storage, store at -20°C

Formulation: Purified antibody in PBS containing 0.03% sodium azide.

Species Reactivities: Human

Tested Applications: WB, IF, ELISA. Not yet tested in other applications. Determining optimal working dilutions by titration test.

Application notes: WB. 1/500 - 1/2000, IF. 1/200 - 1/1000, ELISA. Propose dilution 1/10000.

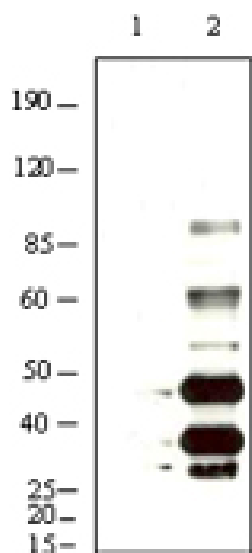


Figure 1. Western blot analysis using KSHV K8 α mouse mAb against BCBL-1 (1) and TPA induced BCBL-1 (2) cell lysate.

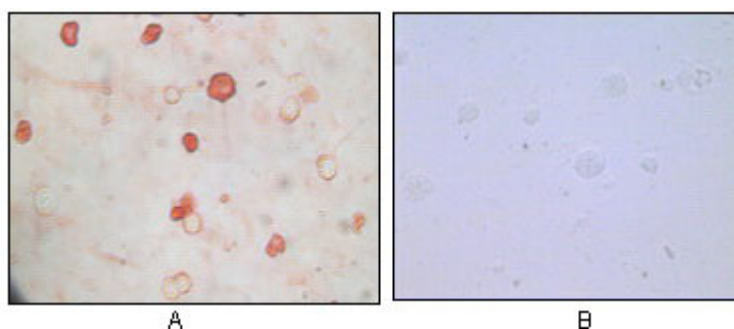


Figure 2. Immunocytochemistry analysis of TPA induced BCBL-1 cells (A) and uninduced BCBL-1 cells (B) using KSHV K8 α mouse mAb with AEC staining.

