



KSHV ORF45 Mouse Monoclonal Antibody

E10-20016

Background: Kaposi's sarcoma-associated herpesvirus (KSHV) belongs to the gamma-(2)-herpesvirus subfamily and has been closely linked to the Kaposi's sarcoma, primary effusion lymphoma (PEL) and multicentric Castleman's disease. The genome of KSHV is 165-170 kb and contains at least 88 open reading frames. ORF45 protein encoded by an immediate-early gene in the KSHV genome is characterized as a phosphorylated protein, and it is localized in the cytoplasm of infected cells. Studies have shown that ORF45 Protein interacted with cellular IRF-7 and blocked virus-mediated phosphorylation and nuclear translocation of IRF-7. In consequence, ORF45 efficiently inhibited virus-induced production of type I IFN. Zhu et al (2003) reported that the ORF45 Protein was associated with purified virions

Catalog Number: E10-20016

Amount: 100µg/100µl

Clone Number: 2D4A5

Species: Mouse IgG1

Aliases: ORF45

Entrez Gene: 4961474

Immunogen: Purified recombinant fragment of KSHV ORF45 expressed in E. Coli

Storage: Store at 4°C, for long term storage, store at -20°C

Formulation: Purified antibody in PBS containing 0.03% sodium azide.

Species Reactivities: KSHV

Tested Applications: WB, IF, ELISA. Not yet tested in other applications. Determining optimal working dilutions by titration test.

Application notes: WB.1/500 - 1/2000, IF.1/200 - 1/1000, ELISA. Propose dilution 1/10000.

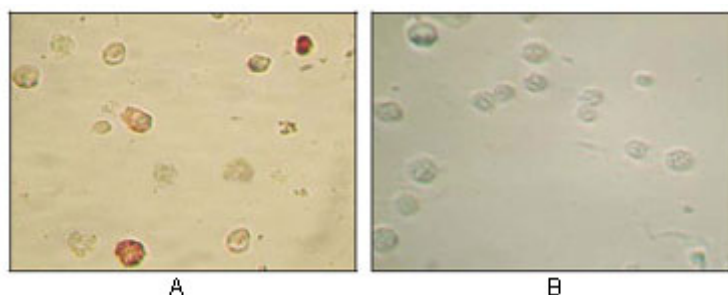
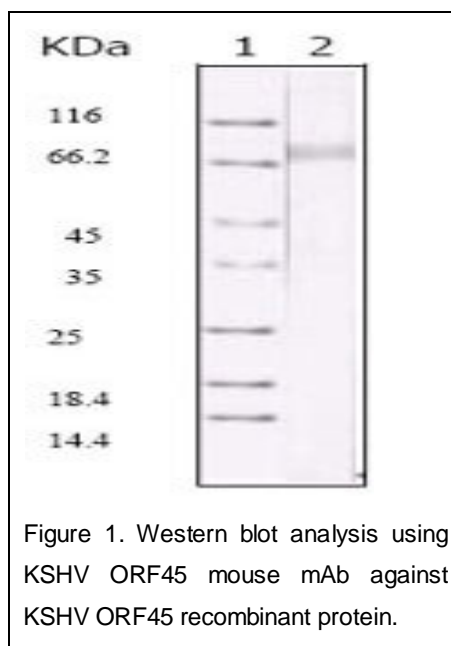


Figure 2. Immunocytochemistry analysis of TPA induced BCBL-1 cells (A) and uninduced BCBL-1 cells (B) using KSHV ORF45 mouse mAb with AEC staining.

For Research Use Only