



CD14 Mouse Monoclonal Antibody

E10-20020

Background: CD14 antigen is a GPI-linked glycoprotein with a molecular weight of 55kD. The CD14 antigen is expressed on cells of the myelomonocytic lineage including monocytes, macrophages and Langerhans cells. Low expression is observed on neutrophils and on human B cells. CD14 antigen is a receptor for bacterial lipopolysaccharide (LPS, endotoxin) and the lipopolysaccharide binding protein (LBP). LBP and CD14 antigen serves two physiological roles. These proteins act as opsonin and opsonic receptor, respectively, to promote the phagocytic uptake of bacteria or LPS-coated particles by macrophages.

Catalog Number: E10-20020

Amount: 100µg/100µl

Clone Number: 5A3

Species: Mouse IgG1

Aliases: CD14

Entrez Gene: 4961462

Immunogen: Purified recombinant fragment of human CD14 expressed in E. Coli.

Storage: Store at 4°C, for long term storage, store at -20°C

Formulation: Purified antibody in PBS containing 0.03% sodium azide.

Species Reactivities: Human

Tested Applications: IHC, IF, ELISA. Not yet tested in other applications. Determining optimal working dilutions by titration test.

Application notes: IHC: 1/200 - 1/1000, IF: 1/200 - 1/1000, ELISA. Propose dilution 1/10000.

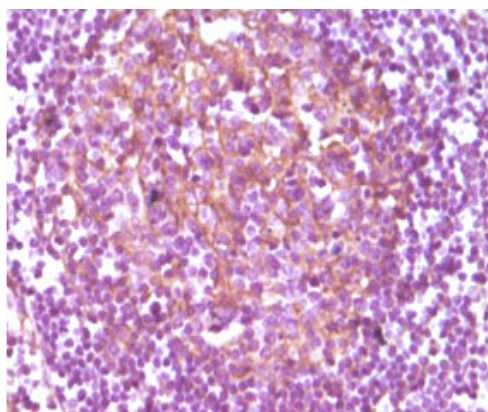


Figure 1. Immunohistochemical analysis of paraffin-embedded human lymphnode, showing membrane localization using CD14 mouse mAb with DAB staining.

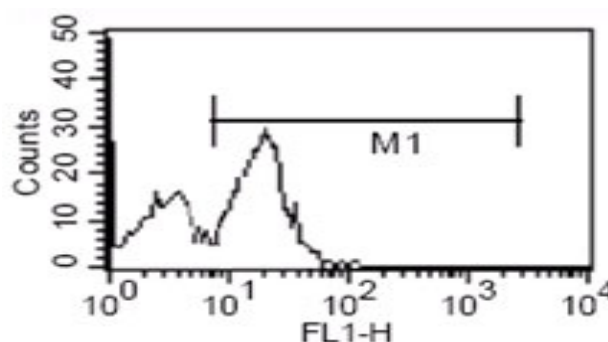


Figure 2. Flow cytometric analysis of human PBMC using CD14 mouse mAb.