



MCL-1 Mouse Monoclonal Antibody

E10-20027

Background: Mcl-1 (Myeloid cell leukemia-1) is Bcl-2-related and was identified as an early-induction gene that increased in expression during the differentiation of human myeloblastic leukemia cell ML-1, or exposure to different DNA damaging agents. The level of Mcl-1 is decreased in peripheral B lymphocytes undergoing apoptosis following treatment with apoptotic stimuli such as TGF- α 1 and forskolin. Expression of Mcl-1 is able to delay apoptosis induced by over-expression of c-myc in CHO 5AHSmyc cells. In hematopoietic FDC-P1 cells, Mcl-1 interacts with another Bcl-2-related protein, Bax, and prolongs cell viability after treatment with different apoptotic reagents. This monoclonal antibody detected a 37kd MCL1 in BCBL-1 cell lysate.

Catalog Number: E10-20027

Amount: 100 μ g/100 μ l

Clone Number: 8C6, 8C6D4B1

Species: Mouse IgG1

MW: 37kDa

Aliases: EAT, MCL1L, MCL1S

Entrez Gene: 4170

Immunogen: Purified recombinant fragment of human MCL-1 expressed in E. Coli

Storage: Store at 4°C, for long term storage, store at -20°C

Formulation: Purified antibody in PBS containing 0.03% sodium azide

Species Reactivities: Human

Tested Applications: WB, IHC, IF, ELISA. Not yet tested in other applications. Determining optimal working dilutions by titration test.

Application notes: WB. 1/500 - 1/2000, IHC. 1/200 - 1/1000, IF. 1/200 - 1/1000, ELISA. Propose dilution 1/10000.

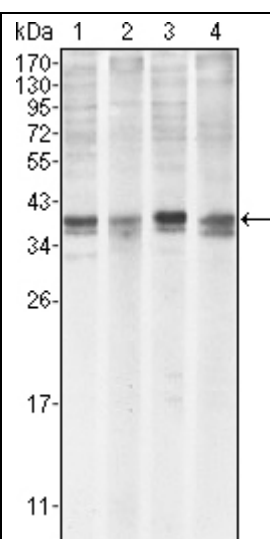


Figure 1. Western blot analysis using MCL1 mouse mAb against HeLa (1), BCBL-1 (2), Jurkat (3) and HL60 (4) cell lysate.

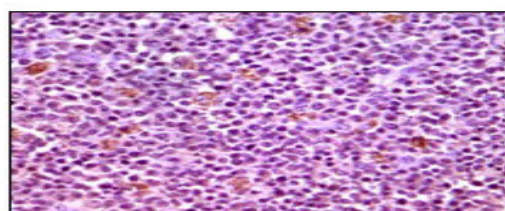


Figure 2. Immunohistochemical analysis of paraffin-embedded human lymphnode tissues using MCL1 mouse mAb with DAB staining.

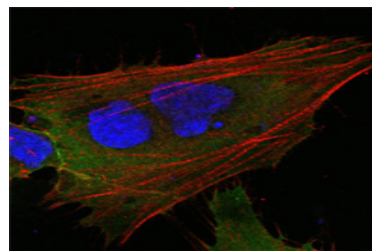


Figure 3. Confocal immunofluorescence analysis of HepG2 cells using MCL1 mouse mAb (green). Red. Actin filaments have been labeled with DY-554 phalloidin. Blue. DRAQ5 fluorescent DNA dye.

For Research Use Only