



KSHV ORF26 Mouse Monoclonal Antibody

E10-20036

Background: Kaposi's sarcoma-associated herpesvirus (KSHV) belongs to the gamma-(2)-herpesvirus subfamily and has been closely linked to the Kaposi's sarcoma, primary effusion lymphoma (PEL) and multicentric Castleman's disease. The genome of KSHV is 165-170 kb and contains at least 88 open reading frames. KSHV ORF26 open reading frames are juxtaposed and span from nucleotide (nt) 46933 to 47850 of the virus genome. Akula et al (2003) report it acts as a Capsid protein.

Catalog Number: E10-20036

Amount: 100µg/100µl

Clone Number: 2F6B8

Species: Mouse IgG1

Aliases: ORF26

Entrez Gene: 4961509

Immunogen: Purified recombinant fragment of KSHV ORF26 expressed in E. Coli.

Storage: Store at 4°C, for long term storage, store at -20°C

Formulation: Ascitic fluid containing 0.03% sodium azide.

Species Reactivities: Human

Tested Applications: WB, ELISA. Not yet tested in other applications. Determining optimal working dilutions by titration test.

Application notes: WB.1/500 - 1/2000 ,ELISA. Propose dilution 1/10000.

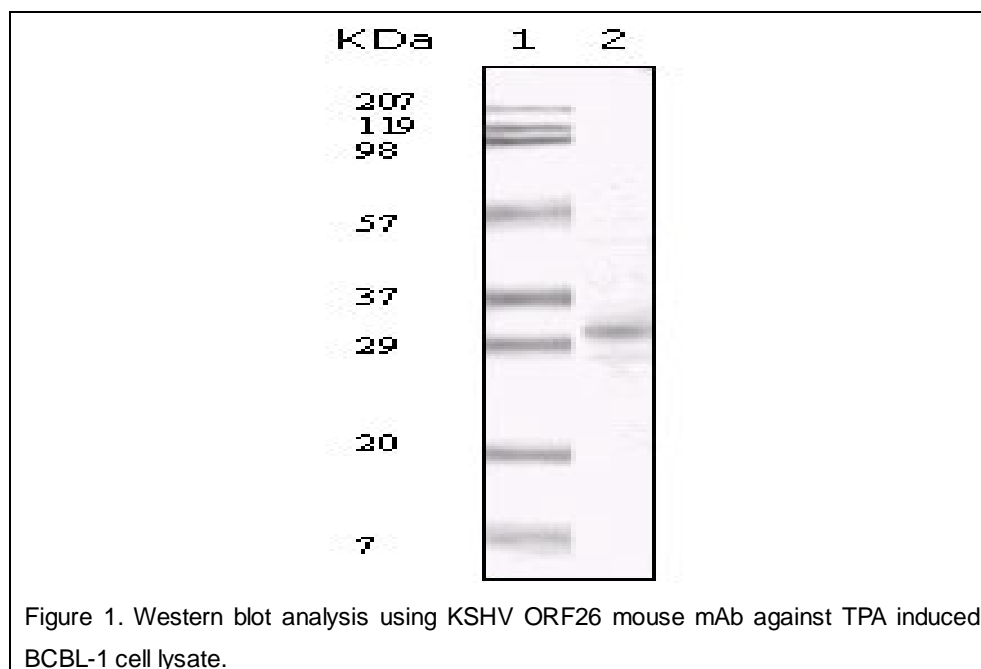


Figure 1. Western blot analysis using KSHV ORF26 mouse mAb against TPA induced BCBL-1 cell lysate.

For Research Use Only