



Calcyclin Mouse Monoclonal Antibody

E10-20054

Background: Calcyclin encoded by this gene is a member of the S100 family of proteins containing 2 EF-hand calcium-binding motifs. S100 proteins are localized in the cytoplasm and/or nucleus of a wide range of cells, and involved in the regulation of a number of cellular processes such as cell cycle progression and differentiation. S100 genes include at least 13 members which are located as a cluster on chromosome 1q21. This protein may function in stimulation of Ca²⁺-dependent insulin release, stimulation of prolactin secretion, and exocytosis. Chromosomal rearrangements and altered expression of this gene have been implicated in melanoma.

Catalog Number: E10-20054

Amount: 100µg/100µl

Clone Number: 7D11

Species: Mouse IgG1

Aliases: S100A6; 2A9; PRA; 5B10; CABP; CACY

Entrez Gene: 27101

Immunogen: Purified recombinant fragment of calcyclin expressed in E. Coli.

Storage: Store at 4°C, for long term storage, store at -20°C

Formulation: Purified antibody in PBS containing 0.03% sodium azide.

Species Reactivities: Human

Tested Applications: WB, IF, ELISA. Not yet tested in other applications. Determining optimal working dilutions by titration test.

Application notes: WB.1/500 - 1/2000, IF.1/200 - 1/1000, ELISA. Propose dilution 1/10000.

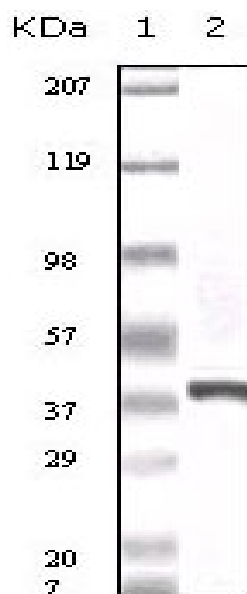


Figure 1. Western blot analysis using calcyclin mouse mAb against truncated calcyclin recombinant protein.

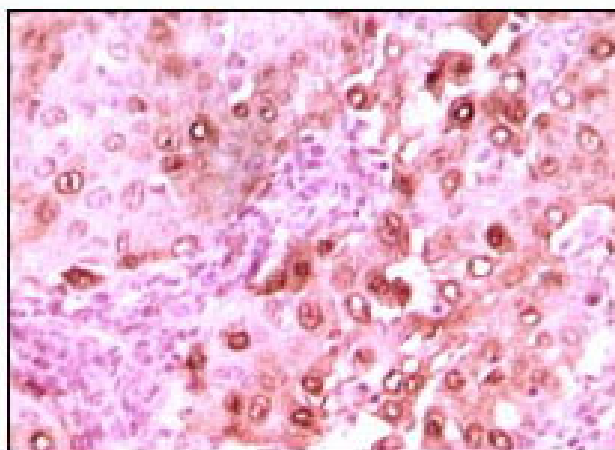


Figure 2. Immunohistochemical analysis of paraffin-embedded human brain glioma tissue showing nuclear localization using calcyclin mouse mAb with DAB staining.

For Research Use Only