



GLP Mouse Monoclonal Antibody

E10-20060

Background: Glucagon-like peptide-1 (GLP-1) is an incretin hormone secreted from enteroendocrine L cells in response to ingested nutrients. The closely related peptides glucagon-like peptide (GLP-1) and glucagon have opposing effects on blood glucose. GLP-1 induces glucose-dependent insulin secretion in the pancreas, while glucagon stimulates gluconeogenesis and glycogenolysis in the liver. Glucagon is processed from a large precursor, proglucagon, in a tissue-specific manner in pancreatic alpha-cells. The identification of a hybrid peptide acting as both a GLP-1 agonist and a glucagon antagonist would provide a novel approach for the treatment of type 2 diabetes.

Catalog Number: E10-20060

Amount: 100µg/100µl

Clone Number: 1B7B4

Aliases: GLP

Entrez Gene: 79813

Immunogen: Purified recombinant fragment of GLP expressed in E. Coli.

Storage: Store at 4°C, for long term storage, store at -20°C

Formulation: Purified antibody in PBS containing 0.03% sodium azide.

Species Reactivities: Human

Tested Applications: WB, ELISA. Not yet tested in other applications. Determining optimal working dilutions by titration test.

Application notes: WB.1/500 - 1/2000, ELISA. Propose dilution 1/10000.

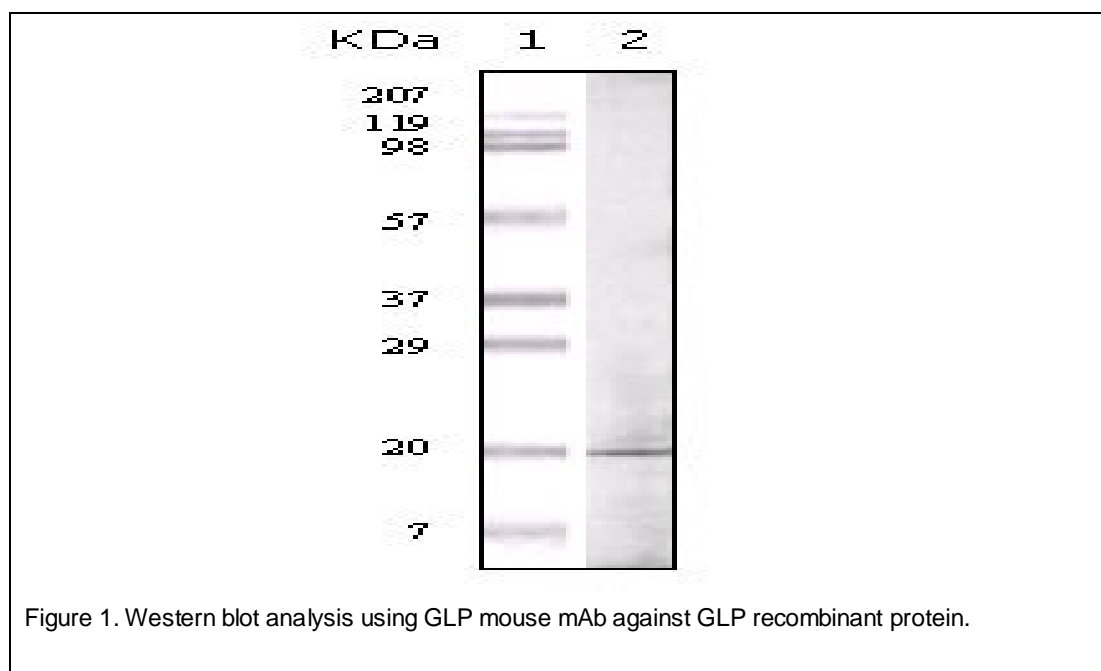


Figure 1. Western blot analysis using GLP mouse mAb against GLP recombinant protein.

For Research Use Only