



EphA2 Mouse Monoclonal Antibody

E10-20071

Background: EPH receptor A2 (EphA2), with 976-amino acid protein (about 107 kDa), belongs to the ephrin receptor subfamily of the protein-tyrosine kinase family. EphA1, EphA2, EphA3, EphA4, EphA5, EphA6, EphA7, EphA8, EphA10, EphB1, EphB2, EphB3, EphB4 and EphB6 are Eph family receptors for Ephrin family ligands. In normal cells, EphA2 negatively regulates cell growth and invasiveness. EphA2 is overexpressed by many human cancers, and is often associated with poor prognostic features. The clinical significance of the expression of EphA2 was observed in breast, prostate, colon, skin, cervical, ovarian, and lung cancers. EphA2 may serve as a novel target for bladder cancer, colonic adenocarcinoma and ovarian cancer therapy.

Catalog Number: E10-20071

Amount: 100µg/100µl

Clone Number: 1B3C7

Species: Mouse IgM

Aliases: ECK; EPHA2

Entrez Gene: 1969

Immunogen: Purified recombinant fragment of EphA2 expressed in E. Coli.

Storage: Store at 4°C, for long term storage, store at -20°C

Formulation: Ascitic fluid containing 0.03% sodium azide.

Species Reactivities: Human

Tested Applications: WB, IHC, ELISA. Not yet tested in other applications. Determining optimal working dilutions by titration test.

Application notes: WB. 1/500 - 1/2000, IHC. 1/200 - 1/1000, ELISA. Propose dilution 1/10000.

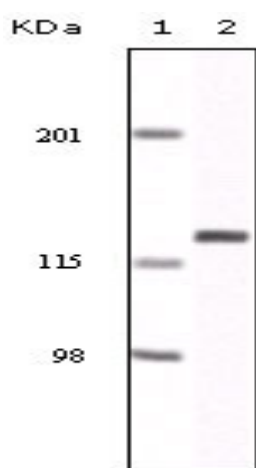


Figure 1. Western blot analysis using EphA2 mouse mAb against NIH/3T3 cell lysate.

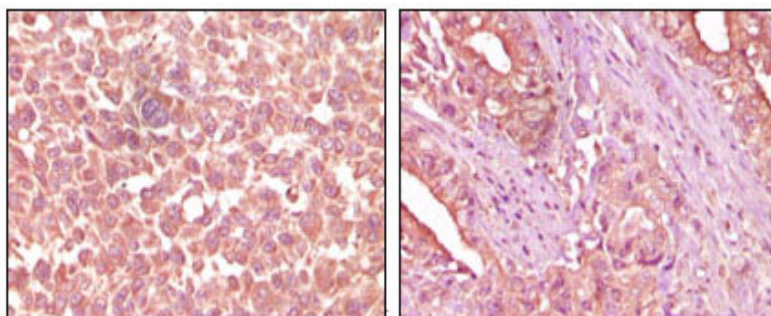


Figure 2. Immunohistochemical analysis of paraffin-embedded human skin carcinoma (left) and pancreas carcinoma (right) tissue, showing cytoplasmic localization using EphA2 mouse mAb with DAB staining.

For Research Use Only